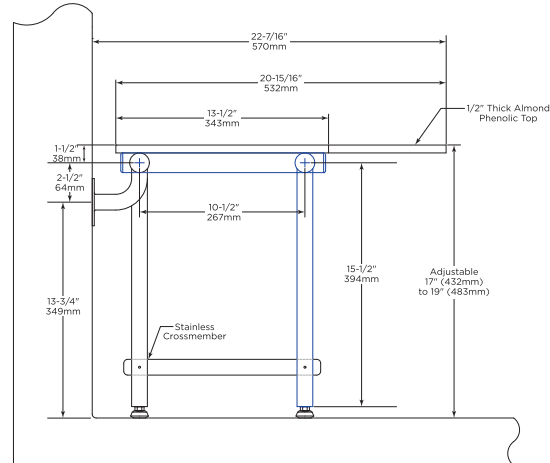
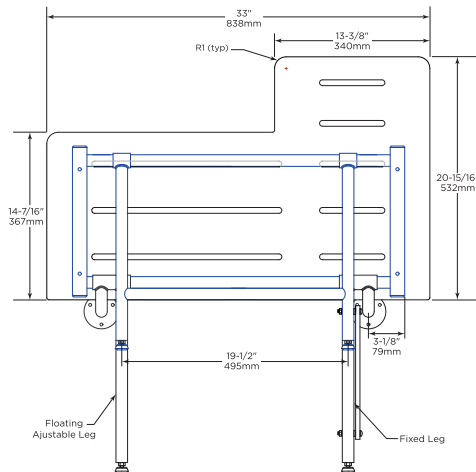




Technical Data

REVERSIBLE SEAT WITH SWING DOWN LEG SHOWER SEAT

B-51815



MATERIALS:

Frame – Type 304 (18-8) S.S. tubing, 1-1/4" (32mm) x 18 ga. (1.2mm) sq. main frame with 1" (25mm) x 18 ga. (1.2mm) rd. cross members.

Wall Flanges – Type 304 (18-8) S.S., 10 ga. (3.4mm) x 3" (76mm) Dia. Hellarc welded to 1" (25mm) rd. x 18 ga. (1.2mm) 90-degree leg supports, and to 1-1/4" (32mm) rd. x 12 ga. (2.7mm) frame hinge couplings. Three mounting holes in each flange.

Swing Down Legs – "H" Shaped yoke of type 304 (18-8) S.S. 1" Dia. (25mm) x 18ga. (1.2mm) rd. tubing, heliarc welded to 1-1/4" (32mm) rd. x 12 ga. (2.7mm) frame hinge couplings.

OPERATION:

Seat is automatically held in a raised position by a stainless-steel cross member attached to the front and rear support legs. When the seat is lowered into its down position using Lift-Assist Technology™, the Swing Down Leg automatically aligns the front and rear support legs with the help of the stainless-steel cross member.

INSTALLATION:

Use punched mounting holes in fixture as a template for marking the locations for the wall anchors (not provided) on the wall. Install the wall anchors. Fasten the fixture to the wall using the screws (provided).

SPECIFICATION:

Shower Seat metal components shall be type 304 stainless steel; platform shall be made from phenolic. The swing down legs automatically level when the seat is lowered to a horizontal sitting position. The seat is automatically held when swung into its 'up' position with the use of the stainless-steel cross member.

Reversible Seat with Swing Down Leg Shower Seat shall be Model B-51815 of Bobrick Washroom Equipment, Inc., Clifton Park, New York; Jackson, Tennessee; Los Angeles, California; Bobrick Washroom Equipment Company, Scarborough, Ontario; Bobrick Washroom Equipment Pty. Ltd., Australia; and Bobrick Washroom Equipment Limited, United Kingdom.