



Commercial Vacuums FOR PROPERTY MANAGEMENT



EXPERIENCE THE DVAC
1 Pass CLEANING SOLUTION™

Smarter Cleaning



Deluxe Rim Caddy's organized storage of cleaning supplies makes an extra trip to the supply closet unnecessary.



Holds two can liners for collecting recyclable and general waste, eliminating a separate waste collection pass through an area.



A powerful commercial grade vacuum is integrated into the dolly to maximize one pass productivity.



At 65.3 dBA, DVAC 1 Pass Cleaning Solution's™ quiet operation supports day cleaning.



DVAC

Combines vacuuming, cleaning, and waste collection into an efficient, single-pass process, saving up to **66%** of non-productive travel time.

1 Pass Cleaning Solution™

Smarter Savings

Easy

ORGANIZED SYSTEM
IMPROVES EFFICIENCY

Powerful

INNOVATION THAT
MAXIMIZES PRODUCTIVITY

Smart

SAVES TIME, SAVES MONEY
FOR QUICK RETURN ON
INVESTMENT

See it in
ACTION

www.rubbermaidvacuums.com



DVAC 1 PASS CLEANING SOLUTION™

Introducing a revolutionary new concept in cleaning. DVAC 1 Pass Cleaning Solution™ combines multiple cleaning steps into one, eliminating non-productive labor time to save you money.

OPTIMIZE PRODUCTIVITY

Make waste collection more efficient with a vented BRUTE® 44-Gallon Utility Container (sold separately).

USE FOR DAY CLEANING

Very quiet operation, perfect for noise-sensitive environments and day cleaning.

PROTECT AIR QUALITY

Optional HEPA bag helps protect indoor air quality for greener operation.

CLEAN EFFECTIVELY

On-board crevice, upholstery, and dusting tools included.

WORK EFFICIENTLY

Floor Switch on straight suction model allows user to easily change surface selection from carpet to hard floor.



DVAC 1 PASS CLEANING SOLUTION™ — POWER NOZZLE MODEL WITH DELUXE RIM CADDY
SKU: 9VDVPN4400

AIR FLOW: 110 CFM

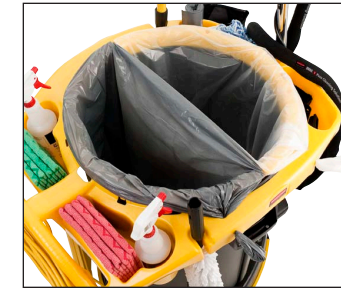
WATER LIFT: 100"

NOISE LEVEL: 65.3 dBA

TOTAL HP: 1.55 (9.5 AMPS)



Power Nozzle Model only.



SUPPORTS RECYCLING EFFORTS

Holds up to 175 lbs of waste and recycling in two easy-to-install can liners.

STAY ORGANIZED

Deluxe Rim Caddy keeps cleaning tools and supplies within easy reach for 1 pass cleaning.



DVAC 1 PASS CLEANING SOLUTION™ — STRAIGHT SUCTION MODEL WITH DELUXE RIM CADDY
SKU: 9VDVSS4400

AIR FLOW: 110 CFM

WATER LIFT: 100"

NOISE LEVEL: 65.4 dBA

TOTAL HP: 1.3 (8 AMPS)

POWERFUL DESIGN

Dedicated powered agitator nozzle handles multiple carpet heights and types.

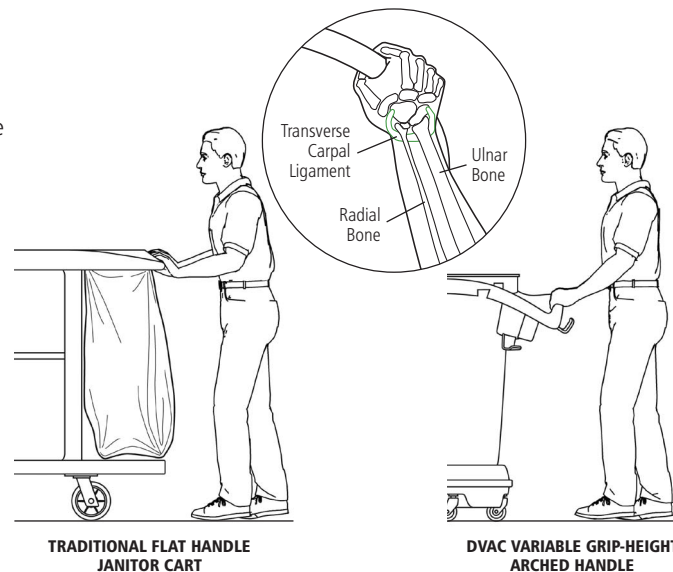
COMMERCIAL-GRADE DURABILITY

Powerful commercial-grade dolly with integrated vacuum.

WORK SAFER, WORK SMARTER

DVAC's ergonomically designed arched handle keeps the user's wrist and forearm bones aligned for optimum leverage and maneuverability.

Safer operation with less risk of injury helps reduce worker compensation claims and lost time.



TRADITIONAL FLAT HANDLE JANITOR CART

DVAC VARIABLE GRIP-HEIGHT ARCHED HANDLE

Smarter Performance & Productivity

Dirty Air and Debris Never Contact the Motor!

PROVIDES MAXIMUM PERFORMANCE
AND EXTENDED PRODUCT LIFE

3-Layer Filter Bag + Single Layer Air Filter + Exhaust Filter
= **5-Layer**
FILTRATION SYSTEM
FOR IMPROVED AIR QUALITY

AIR FILTER
Plush single-layer filter covers the exit channel.

3-LAYER FILTER BAG
Choose from Standard or HEPA 3-layer filter bags. Both bags trap particles as small as .3 microns.

EXHAUST FILTER
Before leaving the vacuum compartment, air is filtered a fifth time through the fixed exhaust filter.

MOTOR HOUSING
Airflow is directed around motor housing, prolonging motor life and improving motor efficiency.



3-LAYER HIGH PERFORMANCE FILTER BAG



3-LAYER HEPA FILTER BAG



HIGHEST PERFORMANCE RATING
Rubbermaid vacuum cleaners have superior suction.

QUIET, EFFICIENT CLEANING

Both **Manual** and **Power Height Upright Vacuums** support day and night cleaning with these standard features:

- **QUIET OPERATION**
Supports day cleaning and use in noise-sensitive environments.
- **ON-BOARD TOOLS**
Crevice tool and upholstery brush are stored on-board.
- **FULL BAG SENSOR**
Tells user when bag needs to be replaced, making cleaning more effective.
- **BRUSH ROLL JAM SENSOR**
Electronic jam sensor shuts down motor so jam can be cleared. Motor is ready to operate immediately, no wait time for motor to cool!
- **LEED POINT QUALIFIED**
Power Height and Manual Height Upright Vacuums qualify for LEED EB CR 3.7.

MANUAL HEIGHT UPRIGHT VACUUM CLEANER
SKU: 9VMH150000
AIR FLOW: 105 CFM
WATER LIFT: 98"
NOISE LEVEL: 68.2 dBA
HP: 1.6 (10 AMPS)

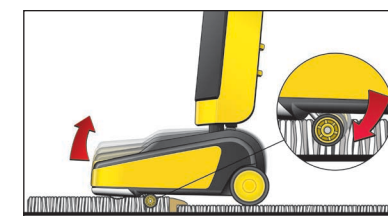
Also available with a 12" cleaning path (9VMH120000).



ADVANTAGES OF DUAL MOTOR STRENGTH

Rubbermaid **Power Height Upright Vacuum** with two motors (1.6 hp vacuum motor and .2 hp brush roll motor) provides single-pass cleaning performance:

- **AUTOMATIC SHUT-DOWN**
Brush roll motor automatically stops rotating when handle is in the upright position, protecting carpet.
- **AUTO-HEIGHT ADJUSTMENT**
Eliminates interruption to manually change height positions for varying floor surfaces.

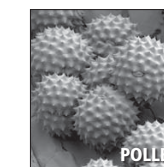
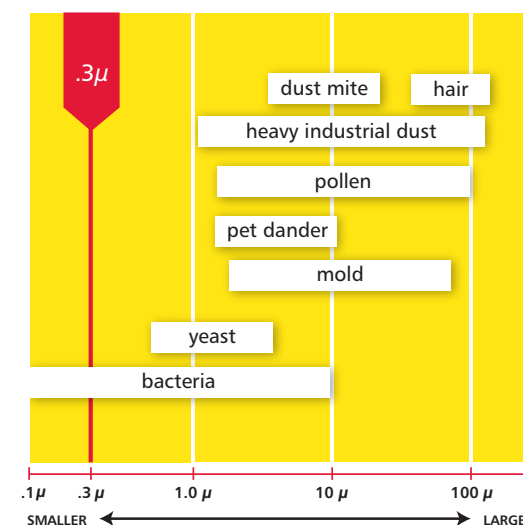


POWER HEIGHT UPRIGHT VACUUM CLEANER
SKU: 9VPH150000
AIR FLOW: 105 CFM
WATER LIFT: 98"
NOISE LEVEL: 67.7 dBA
TOTAL HP: 1.8 (11 AMPS)

Also available with a 12" cleaning path (9VPH120000).



HEPA
FILTERS TRAP
99.97%
of particles
.3 microns or larger



Smarter Comfort

Smarter Durability



BACKPACK VACUUM CLEANERS

Efficiently and quietly clean and maneuver around obstacles. Frame design keeps motor and its heat away from the body and promotes air flow for more comfortable use.

6 QT CAPACITY BACKPACK VACUUM CLEANER
SKU: 9VBP060000

AIR FLOW: 110 CFM
WATER LIFT: 100"
NOISE LEVEL: 66 dBA
HP: 1.3 (8 AMPS)



REDUCES FATIGUE
Large backpack frame disperses weight evenly on hips to reduce worker fatigue.



PROMOTES AIR CIRCULATION
Mesh fabric allows air to freely circulate and helps keep user's body cool.

LIFT HANDLE
Provides easier handling during bag changes.

LEED POINT QUALIFIED
Backpack Vacuum Cleaners qualify for LEED EB CR 3.7.

ON-BOARD CLEANING ATTACHMENTS
Clean upholstery, high areas, and tight, hard-to-reach spaces with included attachments.

Optional hard floor tool now available.

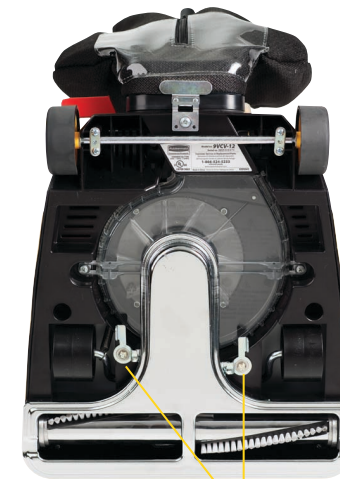
TRADITIONAL UPRIGHT VACUUM CLEANER

Six-position carpet height adjustment control dial and flat-to-floor positioning makes cleaning more productive. Features metal handle tube and bottom plate for durability.

CV16 16" TRADITIONAL UPRIGHT VACUUM CLEANER
SKU: 9VCV160000

AIR FLOW: 156.5 CFM
WATER LIFT: 100"
NOISE LEVEL: 76.8 dBA
HP: 1.13 (7 AMPS)

Also available with a 12" cleaning path (9VCV120000).



EASY TO MAINTAIN
Simply flip two switches (no tool required) on the bottom plate to replace belt or brush roll on the spot, eliminating lost service time.



PROTECTS INDOOR AIR QUALITY

Easy-to-remove paper filter bag improves performance of shake out bag. Filter bag comes standard on this Traditional Upright Vacuum Cleaner.



10 QT CAPACITY BACKPACK VACUUM CLEANER
SKU: 9VBP100000

AIR FLOW: 110 CFM
WATER LIFT: 100"
NOISE LEVEL: 66.9 dBA
HP: 1.3 (8 AMPS)

10 QT CAP. HEPA BACKPACK VACUUM CLEANER
SKU: 9VBH100000

AIR FLOW: 110 CFM
WATER LIFT: 100"
NOISE LEVEL: 65.8 dBA
HP: 1.3 (8 AMPS)



WET & DRY VACUUM CLEANERS



WD16 16 GAL CAPACITY WET & DRY VACUUM CLEANER
SKU: 9VWD160000

AIR FLOW: 110 CFM
WATER LIFT: 105"
HP: 1.9 (12 AMPS)

Also available in 12.5 gallon capacity (9VWD120000).



All accessories included.

TWO-TANK SYSTEM
Exclusive two-tank system separates dry debris from liquids.

IMPROVES EFFICIENCY
Instant wet to dry tank changeover.

ULTRA LIGHT UPRIGHT VACUUM CLEANER



UL12 12" ULTRA LIGHT UPRIGHT VACUUM CLEANER
SKU: 9VUL120000

AIR FLOW: 79.5 CFM
WATER LIFT: 100"
NOISE LEVEL: 70.5 dBA
HP: .65 (4 AMPS)



EASY TO CARRY
Center balanced "easy-carry" handle makes lifting and carrying simple.

EASY TO MANEUVER
Large outboard wheels for easy handling.

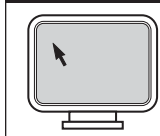
NATIONWIDE SERVICE PROGRAM

Rubbermaid Commercial Products stands behind its products with a best-in-class, coast-to-coast vacuum service program, including:

- Extensive nationwide repair network
- Efficient, professional service personnel
- Quality repairs
- Rapid turnaround to keep you productive

SERVICE PROGRAM OPTIONS

INTERNET



www.rubbermaidvacuums.com

Here you'll find a link to our Vacuums User Support Microsite, available 24 hours a day/7 days per week, including:

- Trouble-shooting guide
- Maintenance tips
- Service center locator
- Product manuals & schematics
- Product specifications
- Product features & benefits

E-MAIL



vacuumscustomerservice@rubbermaidcommercial.com

Contact Customer Service via this e-mail address. Your e-mail will be answered between the hours of:

8:00 am – 7:00 pm EST, Monday through Friday.

PHONE



1-866-524-5233

Call this number to speak with a member of our Vacuum Customer Service Team. Hours of operation are:

8:00 am – 7:00 pm EST, Monday through Friday.

SERVICE



CERTIFIED VACUUM SERVICE CENTERS

Rubbermaid Commercial Products Vacuum Service Centers can repair all units within 72 hours. To locate your nearest authorized service center, call Customer Service at

1-866-524-5233 or use our Online Service Center Locator at www.rubbermaidvacuums.com.



PH12 / PH15 Power Height Upright Vacuum Cleaners MH12 / MH15 Manual Height Upright Vacuum Cleaners

Two (2) Year Limited Parts / One (1) Year Limited Labor Warranty

To the consumer, Rubbermaid Commercial Products, LLC (RCP) warrants to the original owner that this product is free from defects in material and workmanship for a period of two (2) years from the date of the original purchase. If within the first year of the two year period this product becomes defective when used as directed under normal conditions, RCP will either repair or replace the product, covering all parts and labor costs. Within the second year of the two year period, only the cost of parts is covered in the event of a warranty claim. Product must be accompanied by a proof of purchase—a bill of sale, receipted invoice, or other proof that the product is within the warranty period—to obtain warranty service. RCP shall bear the cost of repairing/replacing the product and shipping it back to you. RCP makes no other warranties, express or implied, concerning the product or the merchantability or fitness thereof for any purpose.

This warranty does not apply to product that has been damaged as a result of improper maintenance, accident or other misuse. This warranty is void if the product is repaired or modified in any way by anyone other than an authorized service center. This warranty also does not cover normal wear items such as the following: brush, brush rolls, switches, belts, bags, filters, power cords, casters, wheels, and gaskets. This warranty does not cover unauthorized repairs. In no event shall RCP be liable for incidental or consequential damages.

For product replacement information, or questions regarding replacement parts, please contact customer service directly (within USA & Canada) at 1-866-524-5233.

Legal rights vary from state to state, so the above limitations may not apply to you if precluded by local law.

DVAC 1 Pass Cleaning Solution™ CV12 / CV16 Traditional Upright Vacuum Cleaners UL12 Ultra Light Upright Vacuum Cleaner BP06 / BP10 / BPH10 Backpack Vacuum Cleaners WD12 / WD16 Wet & Dry Vacuum Cleaners

One (1) Year Limited Parts & Labor Warranty

To the consumer, Rubbermaid Commercial Products, LLC (RCP) warrants to the original owner that this product is free from defects in material and workmanship for a period of one (1) year from the date of the original purchase. If, within the one (1) year period, this product becomes defective when used as directed under normal conditions, RCP will either repair or replace the product—at our option—when it is returned complete (postage prepaid and insured) to an authorized service center. Product must be accompanied by a proof of purchase—a bill of sale, receipted invoice, or other proof that the product is within the warranty period—to obtain warranty service. RCP shall bear the cost of repairing/replacing the product and shipping it back to you. RCP makes no other warranties, express or implied, concerning the product or the merchantability or fitness thereof for any purpose.

This warranty does not apply to product that has been damaged as a result of improper maintenance, accident or other misuse. This warranty is void if the product is repaired or modified in any way by anyone other than an authorized service center. This warranty also does not cover normal wear items such as the following: brush, brush rolls, switches, belts, bags, filters, power cords, casters, wheels, and gaskets. This warranty does not cover unauthorized repairs. In no event shall RCP be liable for incidental or consequential damages.

For product replacement information, or questions regarding replacement parts, please contact customer service directly (within USA & Canada) at 1-866-524-5233.

Legal rights vary from state to state, so the above limitations may not apply to you if precluded by local law.



NATIONWIDE COVERAGE

Certified Rubbermaid Commercial Products Vacuum Service Centers are located across the United States.

DEFECTIVE PRODUCT RETURNS

Customers can schedule returns by calling Customer Service at 1-866-524-5233. Customer Service will issue a return authorization number. Customers must ship the product to a Distribution Center. Then, a new product will be shipped to the customer.

REQUIRED INFORMATION

Customers will need to provide the product serial number along with proof of purchase for all warranty claims.



The serial number and Customer Service telephone number are located on every vacuum on the product identification label.



The serial number is also located on the product packaging.

Smarter Cleaning

DVAC 1 PASS CLEANING SOLUTION™

No.	Description	Bag Capacity	Product Weight	Pack
9VDVNP4400	DVAC 1 Pass Cleaning Solution™ Power Nozzle Model w/ Deluxe Rim Caddy	6.5 qt	45.7 lb	1
9VDVSS4400	DVAC 1 Pass Cleaning Solution™ Straight Suction Model w/ Deluxe Rim Caddy	6.5 qt	41.2 lb	1
9VDVRC44	Deluxe Rim Caddy (fits BRUTE® 44-Gallon only)		8.25 lb	1
2643-60 ^A	BRUTE® 44-Gallon Utility Container	44 gal	11.8 lb	4
9VDVPB10	Replacement Paper Bags (10 pack)	6.5 qt		10
9VDVHP10	Replacement HEPA Bags (10 pack)	5.6 qt		10
9VDVEF44	Replacement Exhaust Filter (10 pack)			10

^A Available in Yellow, Red, Gray, Blue, and Black; contact your RCP representative for more information.

POWER HEIGHT & MANUAL HEIGHT UPRIGHT VACUUM CLEANERS

No.	Description	Bag Capacity	Product Weight	Pack
9VPH150000	PH15 - 15" Power Height Upright Vacuum Cleaner	5.63 qt	23.7 lb	1
9VPH120000	PH12 - 12" Power Height Upright Vacuum Cleaner	5.63 qt	23 lb	1
9VMH150000	MH15 - 15" Manual Height Upright Vacuum Cleaner	5.63 qt	20 lb	1
9VMH120000	MH12 - 12" Manual Height Upright Vacuum Cleaner	5.63 qt	19.4 lb	1
9VMHBA12	Replacement Paper Bag for 9VPH12, 9VPH15, 9VMH12, 9VMH15 (10 pack)	5.63 qt		10
9VPEHF12	Replacement Exhaust Filter for 9VPH12, 9VPH15, 9VMH12, 9VMH15			10
9VMHMF12	Replacement Air Filter for 9VPH12, 9VPH15, 9VMH12, 9VMH15			10
9VMHHP	HEPA Filter Kit for 9VPH12, 9VPH15, 9VMH12, 9VMH15 (8 bags & 1 filter)	5.63 qt		6
9VPHBE12	Replacement Timing Belt for 9VPH12, 9VPH15 (6 pack)			6
9VMHBR12	Replacement Brush Roll for 9VMH12			10
9VPHBR12	Replacement Brush Roll for 9VPH12			10
9VMHBR15	Replacement Brush Roll for 9VMH15			10
9VPHBR15	Replacement Brush Roll for 9VPH15			10
9VMHBE12	Replacement Brush Belt for 9VMH12 (6 pack)			6
9VMHBL12	Replacement Motor Belt for 9VMH12 (6 pack)			6

ULTRA LIGHT UPRIGHT VACUUM CLEANER

No.	Description	Bag Capacity	Product Weight	Pack
9VUL120000	UL12 - 12" Ultra Light Upright Vacuum Cleaner	10.63 qt	9.7 lb*	1
9VULBC12	Replacement Cloth Bag for 9VUL12			4
9VULPB12	Replacement Paper Bag for 9VUL12 (10 pack)	10.63 qt		10
9VULBE12	Replacement Belt for 9VUL12 (6 pack)			10
9VULBR12	Replacement Brush Roll for 9VUL12			10

* without cord

NOTE: All water lift measurements are with bare motor.

TRADITIONAL UPRIGHT VACUUM CLEANERS

No.	Description	Bag Capacity	Product Weight	Pack
9VCV160000	CV16 - 16" Traditional Upright Vacuum Cleaner	13.75 qt	18.6 lb	1
9VCV120000	CV12 - 12" Traditional Upright Vacuum Cleaner	13.75 qt	18.2 lb	1
9VCVBA12	Replacement Cloth Dust Bag for 9VCV12 & 9VCV16 with CRI Tube			8
9VCVSB12	Shake Out Bag for 9VCV12, 9VCV16			8
9VCVBE12	Replacement Round Belt for 9VCV12 & 9VCV16 (6 pk)			10
9VCVPB12	Replacement Paper Bag for 9VCV12 & 9VCV16 (10 pk)	13.75 qt		10
9VCVBR12	Replacement Brush Roller for 9VCV12			10
9VCVBR16	Replacement Brush Roller for 9VCV16			10

BACKPACK VACUUM CLEANERS

No.	Description	Bag Capacity	Product Weight	Pack
9VBH100000	10 Qt Capacity HEPA Backpack Vacuum Cleaner	10 qt	13.5 lb**	1
9VBP100000	10 Qt Capacity Backpack Vacuum Cleaner	10 qt	11.7 lb**	1
9VBP060000	6 Qt Capacity Backpack Vacuum Cleaner	6 qt	11.3 lb**	1
9VBPPB06	Replacement Paper Bag for 9VBP06 (10 pack)	6 qt		10
9VBPHPO6	HEPA Bag for 9VBP06 (10 pack)	6 qt		6
9VBPBA06	Replacement Cloth Bag for 9VBP06	6 qt		10
9VBPEF06	Replacement Exhaust Filter for 9VBP06, 9VBP10			10
9VBPHA06	Replacement Backpack Harness for 9VBP06, 9VBP10, & 9VBH10			6
9VBPPB10	Replacement Paper Bag for 9VBP10, 9VBH10 (10 pack)	10 qt		10
9VBPBA10	Replacement Cloth Bags for 9VBP10, 9VBH10	10 qt		10
9VBHHP10	Replacement HEPA Filter for 9VBH10			1
9VBPHS06	Replacement Cleaner Hose for 9VBP06, 9VBP10, 9VBH10			10
9VBPEB06	Backpack Belt Extender for 9VBP06, 9VBP10, 9VBH10			10
9VBPFT06	Hard Floor Tool for 9VBP06, 9VBP10, 9VBH10			5

** without tools

WET & DRY VACUUM CLEANERS

No.	Description	Product Weight	Pack
9VWD160000	WD16 - 16 Gal Capacity Wet & Dry Vacuum Cleaner	48 lb	1
9VWD120000	WD12 - 12.5 Gal Capacity Wet & Dry Vacuum Cleaner	46.8 lb	1
9VWDPF12	Replacement HEPA Pleated Filter for 9VWD12 & 9VWD16 (with foam sleeves)		10
9VWDF12	Replacement Foam Filters for 9VWD12 & 9VWD16 (1 large & 1 small)		50
9VWDHS12	Replacement Hose for 9VWD12 & 9VWD16 (12 ft)		10

A **NewellRubbermaid** Company

©2009 by Rubbermaid Commercial Products LLC
3124 Valley Avenue, Winchester, VA 22601
10/09 MP 35M SM752

Printed on Recycled Paper 

Vacuum Customer Service: 1-866-524-5233
www.rubbermaidvacuums.com

Work Smarter.

