




WORLD DRYER
VERDEdri

HEPA


SSS


VERDEdri

 **WORLD DRYER**



VERDEdri™

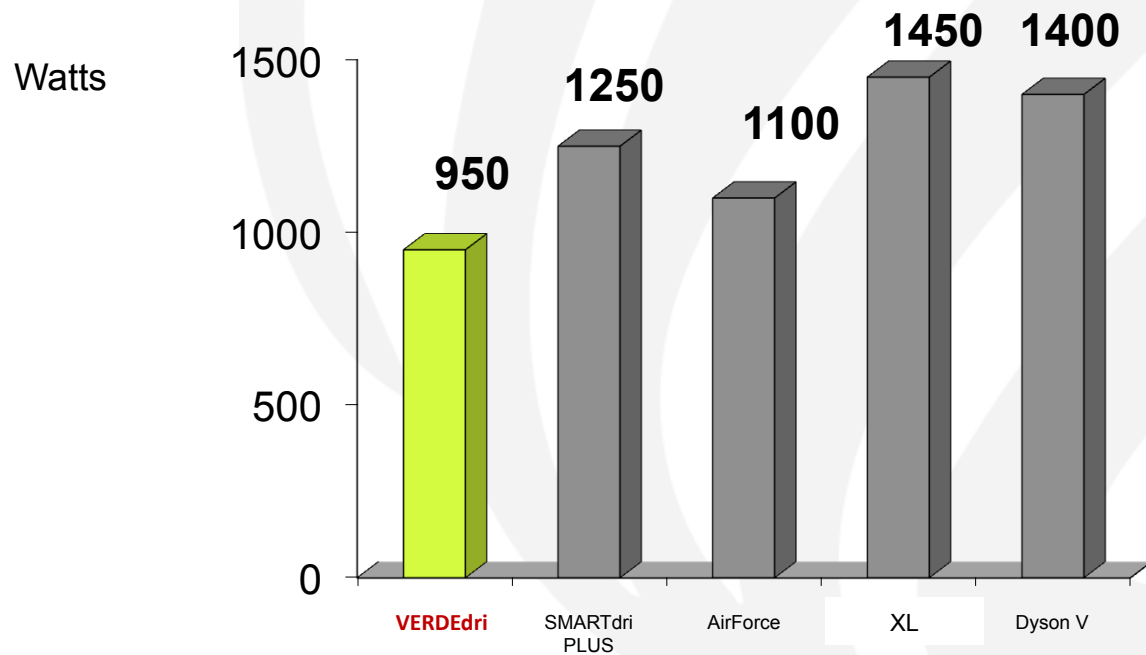
- Adjustable 2-speed motor w/ Dry Time: **12 sec HIGH, 16 sec LOW**
- Energy efficient **950W**
- Global **universal voltage**
- High intensity **single port nozzle**
- **Surface mounted ADA** compliant
- **HEPA** Filtration improves air quality
- **Steri-Touch antimicrobial** technology
- Automatic operation promotes hand hygiene
- **Replaceable motor brushes**
- Modular design for ease of servicing
- **IP24** ingress protection against water





VERDEdri™ is Energy Efficient



The lowest power consumption for high speed heated hand dryers





VERDEdri™ is High Speed

Efficient use of power

Models	MPH	CFM	ADA Surface
VERDEdri	225 mph	70 CFM	
Competitor	215 mph	66 CFM	



VERDEdri™ is Hygienic



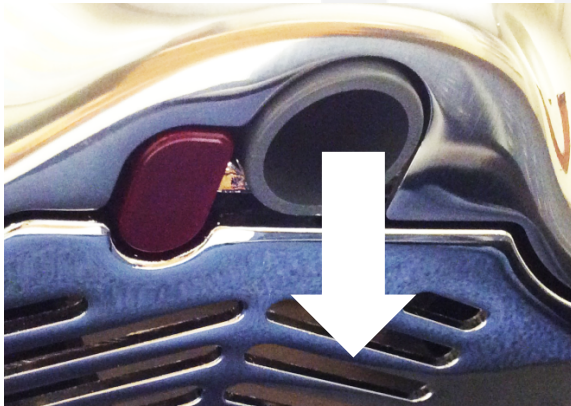
- HEPA Filtration improves hygiene quality
- Automatic operation promotes hand hygiene

- Steri-Touch® antimicrobial technology
 - Inhibiting the growth of bacteria, mold and fungus
 - Extending the dryer's service life



VERDEdri™ is Quieter

Single port nozzle with lower sound level



Models	Sound Level (dBA)
VERDEdri	87 dBA
Competitors	93 dBA



VERDEdri™ is Flexible

- **Global platform universal voltage**
 - 110 – 240 V
 - Fits all installation environments
 - Reduces overstock of various SKUs

- **Adjustable two speed motor controls**
 - Meet varying customer requirements





VERDEdri™ is Flexible

Optional top entry for surface mounted conduit

- Top entry installation for cinder block wall
 - Ideal for school and government buildings that utilize cinder block wall construction

Without Top entry



OR

With Top entry





VERDEdri™ is Durable

Replaceable brush motor to extend product life

Models	Motor Type	Results
VERDEdri	Replaceable Brush	More cost effective to just replace brush for extending product life
Competitors	NO Replaceable Brush	Cost much more to replace the whole motor.



VERDEdri™ Finish Covers

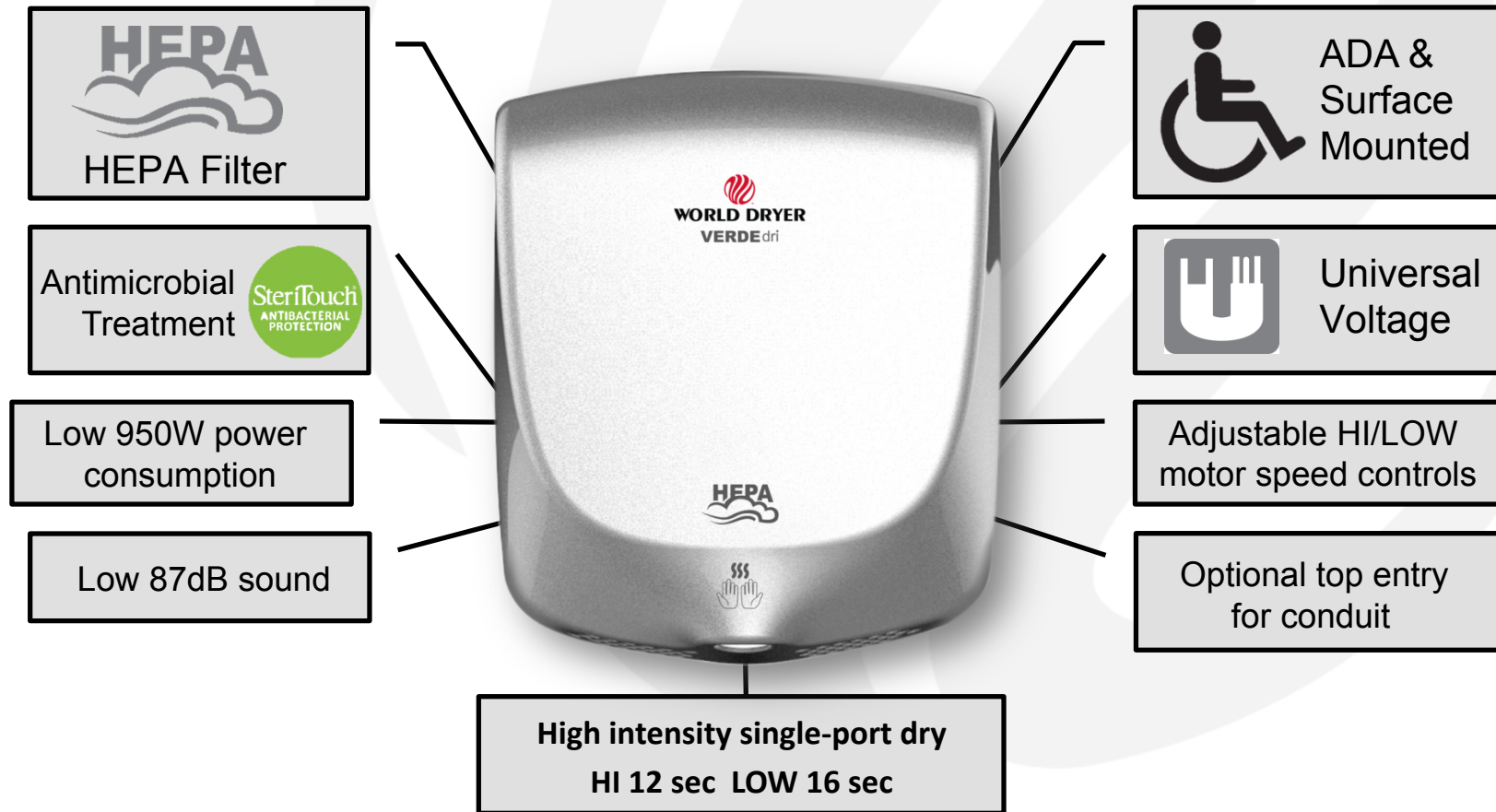


- Aluminum, White
- Aluminum, Black
- Stainless Steel, Brush
- Stainless Steel, Polished



VERDEdri™

New **ALL-in-ONE** hand dryer



VERDEdri™ Hand Dryer

Hi-Speed Surface-Mounted ADA Compliant Hand Dryer

VERDEdri™ is a high speed, surface-mounted ADA compliant hand dryer featuring HEPA filtration system and antimicrobial technology. VERDEdri is extremely energy efficient utilizing only 950 watts of power. The adjustable two speed motor controls and global universal voltage features accommodate any commercial washroom environment.

Fast and Quiet - 12 second dry time. High intensity single port nozzle

Energy Efficient - Energy efficient utilizing only 950 watts of power

Hygienic - HEPA filter reduces contaminants in the air when hand drying • SteriTouch® antimicrobial technology inhibiting the growth of bacteria, mold and fungus extending the dryer's service life



Global Universal Voltage (110-240 Volts)

Flexible - Adjustable two speed controls to customize drying time, sound level and energy savings
• Replaceable motor brushes extends product life



Slim Design - Compact, sleek and modern design complements any washroom décor

Easy Installation - • Simple surface mounted installation reduces installation costs • Optional adapter kit for top-entry conduit



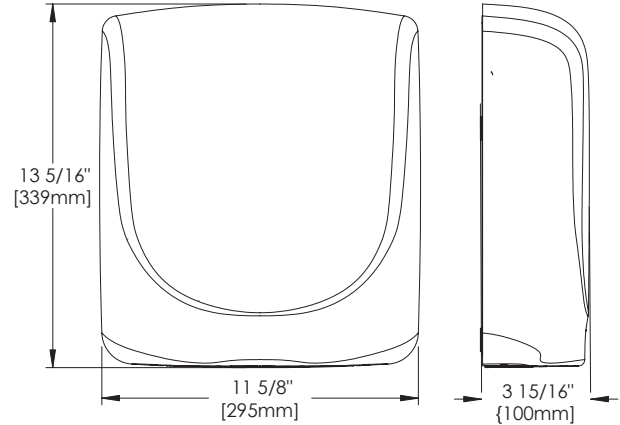
Electrical Specifications

	110-120 V / 208 V / 220-240 V
Amps	8.3
Watts	950
Hz	50/60 Hz

Performance

Air Speed	225 MPH
Air Flow	64 CFM
Air Temperature	130°F at an ambient temperature of 70°F.

Specifications



Aluminum , White



Stainless Steel , Polished



Stainless Steel , Brushed



Aluminum , Black

Cover Material	Cover Finish / Kit	110-120 / 208 / 220-240 V	Unit Weight	Shipping Weight	Unit Size (HxWxD) inch/mm	Shipping Size (HxWxD) inch/mm
Aluminum	White	# Q-974A	9.8 lbs / 4.4 kgs	11.9 lbs / 5.4 kgs	13.3" x 11.6" x 3.9" 339 x 295 x 100	14.2" x 16" x 6.7" 360 x 405 x 170
Aluminum	Black	# Q-162A	9.8 lbs / 4.4 kgs	11.9 lbs / 5.4 kgs	13.3" x 11.6" x 3.9" 339 x 295 x 100	14.2" x 16" x 6.7" 360 x 405 x 170
Stainless Steel	Polished	# Q-972A	11.3 lbs / 5.1 kgs	13.4 lbs / 6.1 kgs	13.3" x 11.6" x 3.9" 339 x 295 x 100	14.2" x 16" x 6.7" 360 x 405 x 170
Stainless Steel	Brushed	# Q-973A	11.3 lbs / 5.1 kgs	13.4 lbs / 6.1 kgs	13.3" x 11.6" x 3.9" 339 x 295 x 100	14.2" x 16" x 6.7" 360 x 405 x 170
Optional Top Entry Adapter Kit		17-10310	3.8 lbs / 1.7 kgs	5.2 lbs / 2.3 kgs	13.4" x 14.3" x 1.2" 339 x 364 x 30	14.8" x 16" x 4.5" 375 x 405 x 114



5700 McDermott Drive, Berkeley, IL 60163
Tel: (800) 323-0701, (708) 449-6950
Fax: (708) 449-6958
www.worlddryer.com



92-MT070 Rev01



Distributor



VERDEdri™ is a high speed, surface-mounted ADA compliant hand dryer featuring HEPA filtration system and antimicrobial technology. VERDEdri is extremely energy efficient utilizing only 950 watts of power. The adjustable two speed motor controls and global universal voltage features accommodate any commercial washroom environment.

Product Benefits

- 12 second dry time
- Automatic surface-mounted ADA compliant simplifies installation and reduces installation costs
- High intensity single port nozzle
- Energy efficient utilizing only 950 watts of power
- HEPA* filter reduces contaminants in the air when hand drying
- Adjustable two speed controls to customize drying time, sound level and energy savings
- Global universal voltage – accepts 110-120 / 208 / 220-240 VAC input
- Incorporates SteriTouch® antimicrobial technology inhibiting the growth of bacteria, mold and fungus extending the dryer's service life
- IP24 rating - protection against harmful water ingress
- Replaceable motor brushes extends product life
- Optional adapter kit¹ for top-entry surface-mounted conduit
- Durable and vandal resistant



Architecture & Engineering Specifications

VERDEdri™ hand dryer shall be manufactured by World Dryer Corporation to include a cover constructed of either die-cast aluminum finished with epoxy paint or stainless steel. The wall mounting plate shall be constructed of die-cast aluminum finished with chrome plating. Epoxy painted covers and molded plastic components shall incorporate SteriTouch® antimicrobial technology inhibiting the growth of bacteria, mold and fungus extending the dryer's service life. The cover shall be attached to the wall mounting plate with tamper-proof screws. Motor shall be a thermally-protected universal brush type motor operating at 31,000 RPM and delivering 64 CFM air flow at a velocity of 225 MPH (19,800 LFM). Motor shall have replaceable brushes for extending service life. Dryer shall incorporate universal controls accepting 115 / 208 / 230VAC input. Dryer will incorporate a nichrome wire heating element protected by an automatic resetting thermal cutoff. Dryer will include a replaceable HEPA (high efficiency particulate air) filter. Dryer shall be activated by an automatic infrared sensor with a 30 second vandal shut-off. Control board shall contain a HI / LOW speed control switch. Dryer shall provide an exit air temperature of 130 °F at an ambient temperature of 70 °F. Dryer shall have an ingress protection rating of IP24. Hand dryer shall be surface-mounted ADA (Americans with Disabilities Act) compliant and certified to standards of safety by Underwriters Laboratories, Inc. and Canadian Standards Association.

Electrical specifications:

	110-120 V / 208 V / 220-240 V
Amps	8.3
Watts	950
Hz	50/60 Hz

Cover options:

Cast Aluminum - with epoxy paint (white or black).

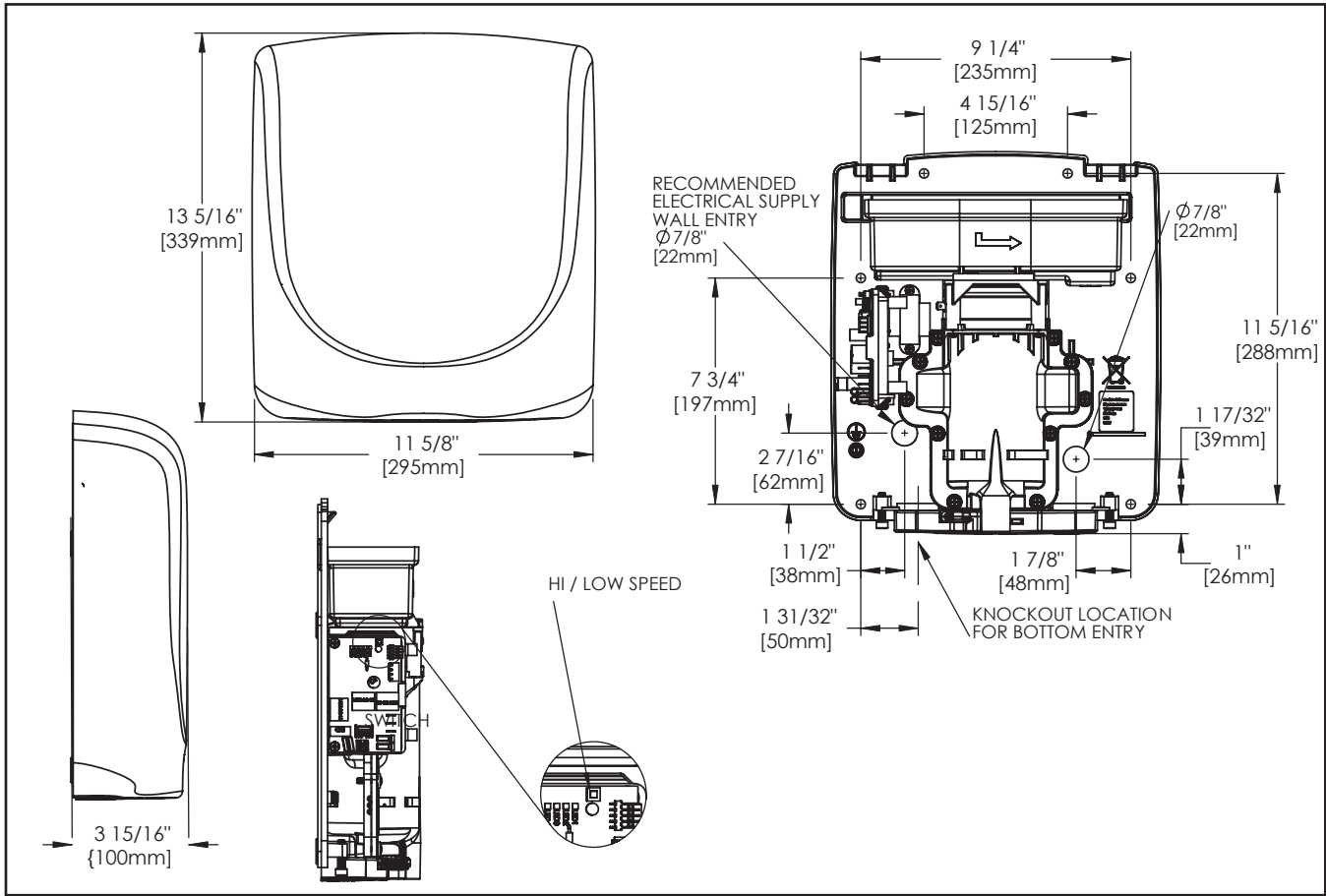
Stainless Steel - with polished or brushed finish

* HEPA filter removes a minimum of 99.97% of contaminants 0.3 microns in size or larger.



¹ The top entry adapter is used in conjunction with the VERDEdri hand dryer where top entry surface mounted electrical conduit connections are required.

Cover Material	Cover Finish / Kit	110-120 / 208 / 220-240 V	Unit Weight	Shipping Weight	Unit Size (HxWxD) inch/mm	Shipping Size (HxWxD) inch/mm
Aluminum	White	# Q-974A	9.8 lbs / 4.4 kgs	11.9 lbs / 5.4 kgs	13.3" x 11.6" x 3.9" 339 x 295 x 100	14.2" x 16" x 6.7" 360 x 405 x 170
Aluminum	Black	# Q-162A	9.8 lbs / 4.4 kgs	11.9 lbs / 5.4 kgs	13.3" x 11.6" x 3.9" 339 x 295 x 100	14.2" x 16" x 6.7" 360 x 405 x 170
Stainless Steel	Polished	# Q-972A	11.3 lbs / 5.1 kgs	13.4 lbs / 6.1 kgs	13.3" x 11.6" x 3.9" 339 x 295 x 100	14.2" x 16" x 6.7" 360 x 405 x 170
Stainless Steel	Brushed	# Q-973A	11.3 lbs / 5.1 kgs	13.4 lbs / 6.1 kgs	13.3" x 11.6" x 3.9" 339 x 295 x 100	14.2" x 16" x 6.7" 360 x 405 x 170
Optional Top Entry Adapter Kit		17-10310	3.8 lbs / 1.7 kgs	5.2 lbs / 2.3 kgs	13.4" x 14.3" x 1.2" 339 x 364 x 30	14.8" x 16" x 4.5" 375 x 405 x 114



Placement Instruction

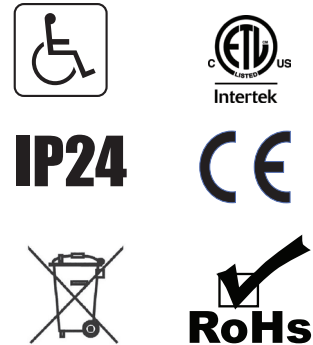
- Hand dryers should be spaced at least 2 feet apart, near but not over the wash basin
- In congested areas, dryers should be located to create a flow from wash basin to dryer to exit
- VERDEdri should be mounted at least 18" above or away from reflective surfaces which may interfere with the automatic sensor operation.
- Dryer Quantity Recommendation:
 Average Traffic: 1 dryer per 2 wash basins
 Heavy Traffic: 1 dryer per wash basin
 Industrial 54" Circular wash fountains: 4 dryers per sink
- Recommended mounting heights from floor to dryer bottom edge

Men's washrooms	46" (117 cm)
Women's washrooms	44" (112 cm)
Children's washrooms, ages 4-7	32" (81 cm)
Children's washrooms, ages 7-10	36" (91 cm)
Children's washrooms, ages 10-13	40" (102 cm)
Children's washrooms, ages 13-17	44" (112 cm)
Handicap Mounting Height	37" (94 cm)

Installation Guide

- VERDEdri hand dryers require a dedicated circuit with a minimum rating of 15 amps and must be properly grounded
- GFI circuit protection is recommended.
- One side of dryer should be mounted to a stud

Certifications



Warranty



5 year limited warranty



5700 McDermott Drive
 Berkeley, IL 60163 U.S.A.
 800-323-0701
 www.worlddryer.com

