

**KNIGHT®**

# MX PLUS

Facility Solutions



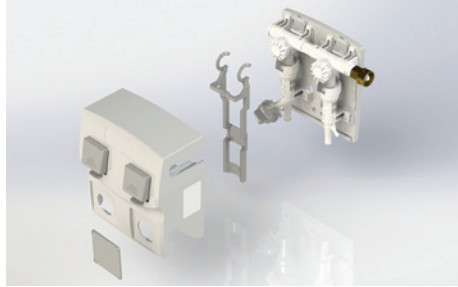
## KEY BENEFITS:

- Tool-less Components – ¼ turn connections; double O-ring design
- Snap-on Cover
- Large, easy-to-use paddles with locking catch
- Engines slide into snap-guides for easy service and re-configuration
- Easily serviced diaphragm with ¼ turn cover
- Compact footprint
- Both Aire-Gap and Flex-Gap backflow devices to meet national and local codes

The MX Plus family of dispensers are the industry's most flexible and field serviceable. Available in an assortment of configurations centered around one, two, and three engine cabinet designs to provide an ample selection of products for most any application. The large buttons are easy to operate and can be locked into the on position by simply engaging the catch. Another push releases the button and stops the flow. The dial-4 selector has a tactile click for each selection of product. Spray bottles can be filled using one hand by pushing the bottle against the actuator bar.

Prefer the water coming in from the left instead of the right? No problem! A quarter turn of the water quick connect allows it to be quickly swapped with the quick connect plug. Wish to upgrade from a single product to a dial 4 selector? No problem! Slide the engine assembly out of the snap guides. Remove the single product engine with a quarter turn. Replace with a dial-4 assembly. Pop out the blanking plate from the cover to reveal a round hole for the dial selector. Connect your four chemical supply lines and replace the snap-on cover.

# TRUSTED SOLUTIONS, MAKING CLEANING EASY...



## TECHNICAL DATA

### Flow Rates

1 GPM (3.8 LPM) bottle fill  
4 GPM (15.2 LPM) bucket fill

### Back Flow Prevention

Flex-Gap or Aire-Gap

### Max. Water Temperature

140° F (60° C)

### Optimal Min. Pressure

30 PSI (2 bar)

### Optimal Max. Pressure

60 PSI (4 bar)

### Certifications

A.S.S.E.  
I.A.P.M.O. (UPC)

## Valve Assembly

FLEX-GAP	AIRE-GAP	DESCRIPTION
7866101-F	7866101-A	1 Product Bottle Fill, Actuator @ 1 GPM
7866104-F	7866104-A	1 Product Bucket Fill, @ 4 GPM
7866401-F	7866401-A	4 Product Bottle Fill, Actuator, Dial-4 @ 1 GPM
7866404-F	7866404-A	4 Product Bucket Fill, Dial-4 @ 4 GPM
7866501-F	7866501-A	5 Product, Dial-4 Bottle Fill w/ Bottle Actuator @ 1 GPM & 1 Product @ 4 GPM
7866802-F	7866802-A	8 Product, Dial-4 Bottle Fill @ 1 GPM w/ Bottle Actuator + Dial-4 @ 4 GPM
7866201-F	7866201-A	2 Product Bucket Fill @ 4 GPM
7866205-F	7866205-A	2 Product, 1 Bottle Fill w/ Bottle Actuator @ 1 GPM & 1 Bucket Fill @ 4 GPM
7866304-F	7866304-A	3 Product Bucket Fill @ 4 GPM
7866305-F	7866305-A	3 Product, 2 Bottle Fills @ 4 GPM & 1 Bottle Fill w/ Bottle Actuator @ 1 GPM
7866605-F	7866605-A	6 Product, 2 Bucket Fills @ 4 GPM & Dial-4 Bottle Fill w/ Bottle Actuator (center engine) @ 1 GPM

## Accessory Kits

6400006	Metering Tip Wrench
7366041-25	Quick Water Connection, Hose Swivel-US, 25 each
7366040-25	Quick Water Connection, Hose Swivel-UK, 25 each
0600873-10	Quick Water Connection, 3/8" John Guest Elbow, 10 each
0600874-10	Quick Water Connection, 3/8" Compression, 10 each
7366035	Quick Connect, 1/2" Barb, 25 each
7366049	Quick Connect, Valve Connector (join dispenser together)

**KNIGHT**  
Trusted Solutions,  
Making Cleaning Easy™

### FOR MORE INFORMATION:

15340 Barranca Parkway  
Irvine, CA 92618-2215

(800) 854-3764  
Fax (949) 595-4801

www.knightequip.com  
cs.knight@idexcorp.com