

**Now in Battery  
Version**

NACECARE™  
**TP4** **DISINFECTANT  
MISTER**



**Effective  
Efficient  
Essential**

click here to watch the video

<https://www.youtube.com/watch?v=88dMeOaSars>

**AVAILABLE IN BOTH CORDED AND BATTERY VERSIONS  
TO DISINFECT & SANITIZE LARGE AREAS QUICKLY & EVENLY**

**PERFECT FOR CREVICES AND HARD TO REACH PLACES**

**2 NOZZLE TIPS TO CONTROL THE AMOUNT OF CHEMICAL  
DISPENSED**

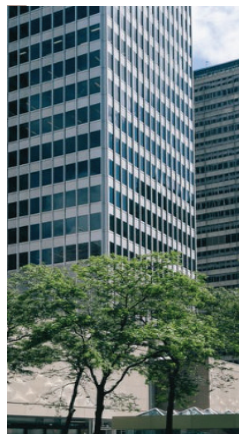
**DESIGNED TO BE USED WITH MOST DISINFECTANTS**

**TP4XB Battery  
8025189**

**TP4X Electric  
8025192**



**Education    Transportation    Gyms    Office    Foodservice Healthcare**



# TP4X & TP4XB Disinfectant Mistlers

## Professional Disinfectant AND Great Value

Portable and lightweight, making it ideal for almost every industry.

### Key Features

Provides a versatile, quick and even application of disinfectant. Misting is the most efficient and productive way to sanitize and disinfect both large areas and hard to reach places.

Equipped with a 4-gallon tank, 17' solution hose and a spray nozzle with two different size tips to accommodate different dwell times. The optional 16" extension wand and transport cart, make this unit perfect for almost every industry. The electric version has a 33' cord while the cordless model is powered by 2 x 12V batteries.

This efficient machine can be used with almost every disinfectant. An optional vacuum/solution hose and hand tool turns the mister electric into an extractor, making it a versatile and economical piece of equipment.

**Electric or  
Battery  
Version**



TP4X/XP Mister  
(shown with optional cart)



*Spray Gun- with two tips (.0025 & .01) for flexibility in amount of disinfectant needed*



*17' Solution Hose*



*Optional 16" Spray Gun Extension*

MODEL	TP 4XB- Mister (battery)	TP 4X- Mister (electric)
Vacuum Motor	500 W, 2 stage	1,500 W, 2 hp 2 stage
Nozzle Size GPM	.0025/.01	.0025/.01
Water FlowGPM	.026/.08	.026/.08
Micron Size	80/100	80/100
Solution Hose	17'	17'
Airflow	72 cfm	106 cfm
Water Lift	51"	120"
Bypass Pump: Pressure	50 psi	60 psi
Bypass Pump: Power	40 W	70 W
Battery Specifications	24V (2 X 12V, 33 Ah)	N/A
Run Time as a sprayer	12 hours	N/A
Charge time	6 hours	N/A
Capacity	4 +4 gal.	4 +4 gal.
Weight	118 lb	27 lb
Power Cord	N/A	33'