



## Touch Free Dry Edge Hand Dryer

**Code 1197:** Dry Edge hand dryer, white and grey finish

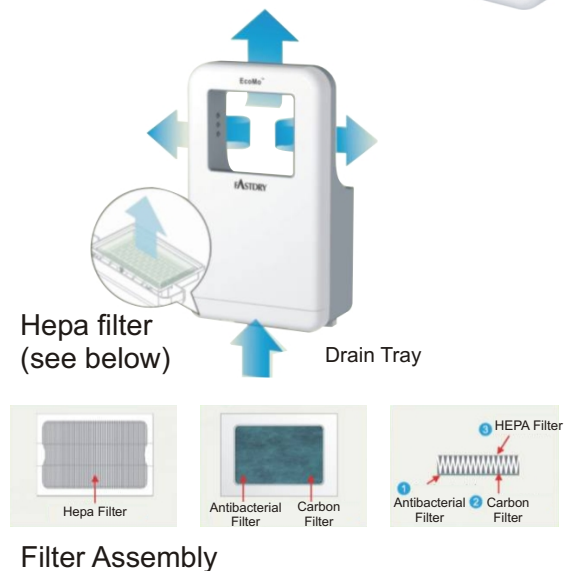
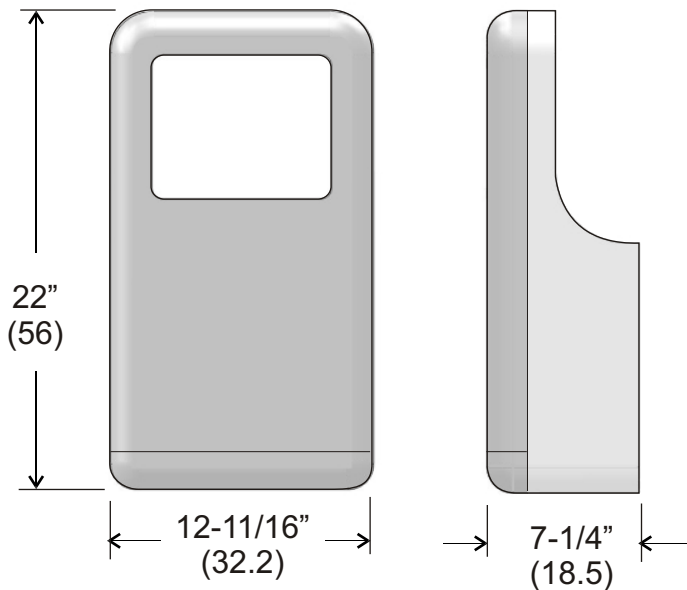
Overall dimensions in inches (centimeters in brackets)

# Dry Edge




### LEED Credits

- Minimum Energy Performance: Design & Construction EA Prerequisite 2
- Minimum Energy Performance: Design & Construction EA Prerequisite 1



## Specifications

- Site Location:** • Ideal for areas requiring efficient hand drying technology.
- Features:** • ABS plastic, with built in anti-bacteria agent. LED status indicators, Standby: displays red; Active during drying displays blue. Drying time is between 10-15 seconds. Drip Proof: IP 23; Isolation: Class 1. Infrared sensor range: 12 cm (4-3/4"). Warm air speed output is 65-100 m/s (140-224 mi/hr) and is adjustable. Easily wheelchair accessible.
- 
- Specifications:** • Dryer volume range: 89-124 m<sup>3</sup>/h (55-76 CFM), adjustable. Heater element has on/off settings with a adjustable range of 300-450w. Sound pressure is min. 65 dB-A - 78-A max. @ 1m. Motor type: 1HP, 400-750W, 11000-20000 R.P.M., Adjustable. Operating Voltage: 110V-120Vac, 50/60 Hz, 9.2-10 A, 1.0-1.2kW.
- Safety Features:** • Motor thermal protection: Auto resetting thermostat turns unit off at 135 Degree C (275 deg. F). Heater thermal protection: Auto resetting thermostat turns unit off at 85 degree C (185 deg. F). Heater Thermal cut off at 142 degrees C (288 deg. F).
- Shipping Weight:** • 10.8 kg (23.8 lbs); G.W.: 12.8ks (28.2 lbs)