

ECO-Matic Range



Sustainably engineered from high-quality material, each model in the ECO-Matic range benefits from 100% Structofoam construction, making it tough, easy to clean, and built to last.

Designed for enhanced usability, productivity and simplicity, ECO-Matic offers a choice of 4 configurations plus optional mopping systems to suit any cleaning task or environment.



Optional Mopping Kits



Quick and Easy Assembly

Get straight to business: each model can be quickly and easily assembled in less than 15 minutes



EM5 Cart with SRK16 mopping kit

Consumables for illustration purposes only



MIDMOP MMT1616

- 1 x Red Handle Bucket, Grey
- 1 x Blue Handle Bucket, Grey
- Accepts folding flat mops
- Can be used with Optional Mop Stand



SRK16 BUCKETS & MOP WRINGER

- 1 x Blue Bucket Handle
- 1 x Red Bucket Handle

Mid-size versatility



- EM3**
- 1 x 32 gal. Cloth Bag
 - 1 x Shelf Storage
 - 2 x 4" Castors
 - Fixed Rear Wheel
 - 22 X 45 X 39 in (WxLxH)



- EM4**
- 2 x 32 gal. Cloth Bag
 - 1 x Shelf Storage
 - 2 x 4" Castors
 - Fixed Rear Wheel
 - 22 X 48 X 39 in (WxLxH)

Maximum storage



- EM5**
- 1 x 32 gal. Cloth Bag
 - 2 x Locking Storage Bins
 - 2 x 4" Castors
 - Fixed Rear Wheel
 - 22 X 45 X 39 in (WxLxH)

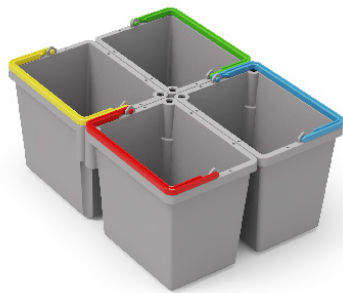


- EM6**
- 2 x 32 gal. Cloth Bag
 - 2 x Locking Storage Bins
 - 2 x 4" Castors
 - Fixed Rear Wheel
 - 22 X 48 X 39 in (WxLxH)

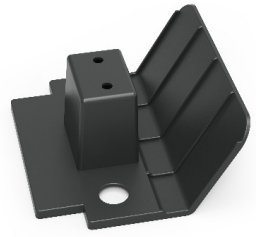
ECO- Matic Accessories



Extra Bag Kit w/cloth bag



Swing Buckets
4 x 5L Swing Bucket Handle
Red / Blue / Green / Yellow



Mop Support Kit
1 x Mop Support
For on-board mop storage



Mop Handle Clips
4 x Mop Clips