

Endura™ is our most effective HDNP commercial solution for heavy traffic entrances!

- Intelligent solution to reduce maintenance costs and protect floors
- As a wiper/scraper mat, its irregular surface will trap dirt and retain moisture for cleaner floors
- Perfect for wall-to-wall installations, oversized entryways or as individual mats (add edging)

## ENDURA™ APPLICATIONS

For interior areas with heavy traffic over 1,500 persons per day. e.g.: University, Airport, Hospital, Large retail store, Shopping mall, School, facility

## FEATURES

- Stain, UV and abrasion resistant for high-performance applications
- Perfect for wall-to-wall installations or individual mats (add edging)
- Can also be used outdoors, under cover

*Not recommended for applications where storage, rolling and unrolling is required*

Compare Endura™ to other Mat Tech products:



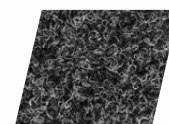
**SCRAPING  
ABILITY**  
**7/10**



**WIPING  
ABILITY**  
**8/10**



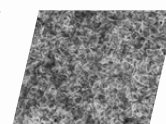
**CRUSH  
RESISTANCE**  
**8/10**



ANTHRACITE



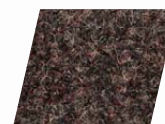
BEIGE



BLUE/GREY



BRONZE/  
GREEN



CINDER



DARK BROWN



NAVY BLUE



OAK

### AVAILABILITY

#### STANDARD SIZES

#### ROLLS

1m X 65'  
2m X 65'  
3m X 65'  
4m X 65'

#### CUSTOM CUTS

Available

#### USE AND CARE

Vacuum and hot water extraction

### TECHNICAL DATA

Fibre: Needle-punched polypropylene  
Pile weight: 44 oz. per sq. yd.  
Backing: Gel foam  
Flammability: Passes D.O.C. -FF-1-70  
Mat thickness: 3/8"  
Total weight: 0.54 lbs per sq. ft.

### WARRANTY



**TOTAL CONFIDENCE  
WARRANTY**

### PROFILE



**Thickness: 3/8"**

### SUGGESTED RETAIL PRICE

Starts at \$4.55 per sq. ft.



T: 1 800 363 6185  
F: 450 375 6158  
[www.mattech.ca](http://www.mattech.ca)

AUTHORIZED DISTRIBUTOR