

# GoFit® 6 HEPA



**The GoFit 6 HEPA backpack vacuum is ProTeam's** most advanced filtration system. The HEPA vacuum is engineered to capture 99.97% of particulates as small as 0.3 microns inside a sealed filter that can trap dust and microscopic atmospheric hazards like mold spores, lead dust, or other particulates.

\*The ProTeam GoFit 6 HEPA and HEPA filter configuration may be used to contain certain hazardous materials, such as mold and lead, when used in accordance with federal (EPA, OSHA), state and local regulations for those substance types.



**HEPA FILTRATION** — efficient at capturing 99.97% of airborne particulates as small as 0.3 microns in size and is ProTeam's most advanced filtration system.

**MULTIPLE APPLICATIONS** — ideal for use when capturing the most dust and debris is needed, including in certain remediation and lead-safe abatement (RRP) applications. ProTeam is also trusted by facility maintenance professionals in hospitals, clinics, and patient care settings. Be sure to consult local, state, and federal guidelines and regulations.

**EPA RRP RULE** — meets the EPA's definition of a HEPA Vacuum under the Lead Safety Renovation, Repair, and Painting Rule (RRP).

**CLEANING FOR HEALTH®** — experience ProTeam's unique method of suction vacuuming to clean carpets, hard floors, and other surfaces without stirring up dust.

# Join The Movement

## The right tool for the right job

**Cleaning or remediation professionals** are only as good as their equipment. The GoFit 6 HEPA backpack vacuum provides effective filtration and particulate containment in a lightweight, ergonomic design. It allows individuals to move freely in tight spaces, increasing mobility, and productivity while reducing user fatigue.

Weight	13.3 lbs. / 6.03 kg.
Motor Airflow	124 CFM
Static Lift	75 in.
Power	780 W / 6.5 A / 120 V
Decibel	63 dBA
Capacity	6 qt.   6.6 L
Limited Warranty	3 years parts, labor and motor, limited lifetime on molded body parts

### Related Products

**847761** HEPA Filter



### Applications include:

- Carpets & Subfloors
- Jobsite Cleanup
- Remediation
- Healthcare
- Smoke & Soot Removal



### 107766 GoFit 6 HEPA w/ Remediation Tool Kit 107466:



- 56" Two-Piece, Two-Bend Aluminum Wand
- 36" One-Bend Bulk Pick Up Tool
- 3" Dust Brush
- 5" Upholstery Tool
- 14" Hard Floor Tool w/ Nylon Brush
- 14" Carpet Tool w/ Scallops

### 107767 GoFit 6 HEPA w/ Xover Performance Telescoping Wand Tool Kit 107099:



- 42" to 57" Telescoping Wand
- 14" Xover Performance Floor Tool
- 17" Crevice Tool
- 3" Dust Brush
- 5" Upholstery Tool

**ProTeam**

[proteam.emerson.com](http://proteam.emerson.com)

866.888.2168

[customerservice.proteam@emerson.com](mailto:customerservice.proteam@emerson.com)



The American Lung Association does not endorse product, device or service.

**EMERSON**

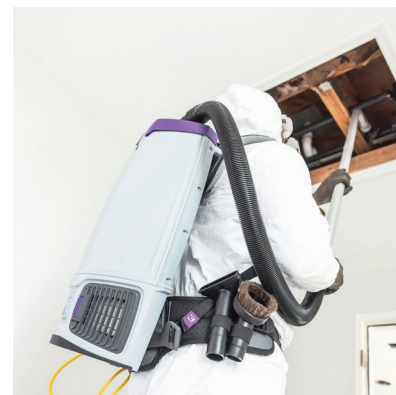
500128 4/25

# ProTeam GoFit® 6 HEPA

107766 GoFit 6 HEPA w/ Remediation Tool Kit (107466)

**\$915**

The GoFit 6 HEPA backpack vacuum is ProTeam's most advanced filtration system. The HEPA vacuum is engineered to capture 99.97% of particulates as small as 0.3 microns inside a sealed filter that can trap dust and microscopic atmospheric hazards like mold spores, lead dust, smoke, or other particulates. The GoFit 6 HEPA is ideal for remediation, lead-safe abatement (RRP), and improving indoor air quality in hospitals, clinics, and patient care spaces.



## Specifications

Weight:	13.3 lbs. / 6.03 kg.
Motor Airflow:	124 CFM
Static Lift:	75 in.
Motor:	780 W / 6.5 A / 120 V
Decibel:	63 dBA
Capacity:	6 qt. 6.6 L
Four Level® Filtration w/HEPA:	1756 sq. in. total area

## HEPA Filtration

- **HEPA:** 99.97% at 0.3 microns per ASTM F3150

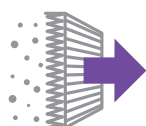
## Limited Warranty

- 3 years parts, labor and motor on vacuum
- Limited lifetime on molded body parts

## Optional Configurations

107767	HEPA w/Xover® Performance Telescoping Wand Tool Kit C (107099)	\$850
--------	--	-------

*\*The ProTeam GoFit 6 HEPA and HEPA filter configuration may be used to remove certain hazardous materials, such as mold and lead. When using the GoFit 6 HEPA vacuum cleaner to remove hazardous materials, consult your applicable regulatory agencies for additional requirements.*



**HEPA**



**INDOOR  
AIR  
QUALITY**



**PERFORMANCE**

## \*Standard Configuration

Two-Piece Aluminum Wand w/Button Lock	5" Upholstery Tool
36" One-Bend Bulk Pick-Up Tool	3" Dust Brush
14" Carpet Tool w/Scallops	
14" Hard Floor Tool w/ Nylon Brush	

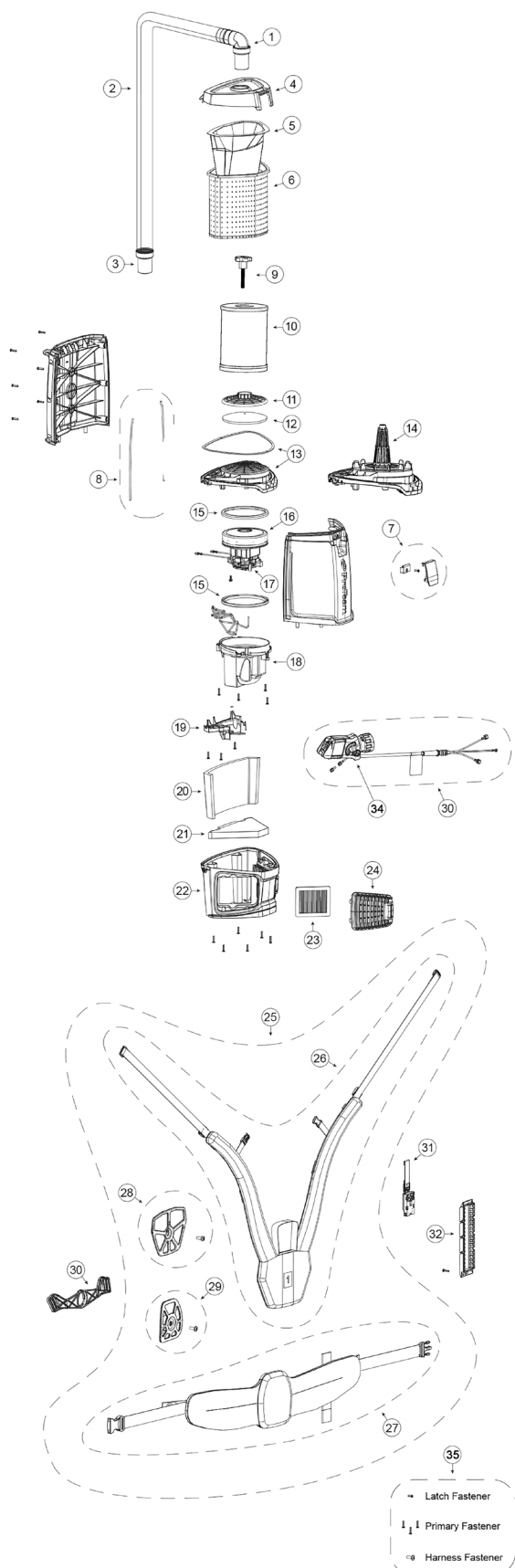
## Related Products

107314	Intercept Micro® Filters, 10/pk (open collar)	\$22.58
107374	Intercept Micro Filters, 10/pk (closed collar)	32.02
847761	HEPA Filter	280.00

*Specification calculations are based on average motor performance.*



# GOFIT 3, 6, 6 PLUS, 6 HEPA & 10 PARTS



No.	Product Name	Qty	List Price
1A	101928 Replacement Double Swivel Elbow Cuff	1 ea.	\$15.42
1B	100694 Replacement Double Swivel Straight Cuff	1 ea.	9.20
2	107648 48" Static-Dissipating Hose w/Non-Replaceable Elbow and Straight Cuffs	1 ea.	41.57
	100505 48" Static-Dissipating Hose w/ Straight Cuffs	1 ea.	39.73
3	100694 Replacement Double Swivel Straight Cuff	1 ea.	9.20
4	843694 Purple Cap	1 ea.	38.21
5	107313 Intercept Micro Filter (GoFit 10)	10/pk	30.60
	107314 Intercept Micro Filter (GoFit 6)	10/pk	22.58
	107374 Intercept Micro Filter (GoFit 6 HEPA)	10/pk	32.02
	107666 Intercept Micro Filter (GoFit 3)	10/pk	22.03
6	834000 Micro Cloth Filter (GoFit 10)	1 ea.	50.30
	834072 Micro Cloth Filter (GoFit 6)	1 ea.	41.54
	843966 Micro Cloth Filter (GoFit 3)	1 ea.	37.84
7	510779 Latch Assembly Complete w/ Retainer and Screw	1 ea.	9.17
8	834035-5 Gasket Tank 10 QT	2 ea.	4.33
	834035-3 Gasket Tank 6 QT	2 ea.	4.33
	834035-4 Gasket Tank 3 QT	2 ea.	4.33
9	847834 Filter Knob (GoFit 6 HEPA)	1 ea.	5.04
10	847761 HEPA Filter (GoFit 6 HEPA)	1 ea.	280.00
11	510183 Dome Filter w/ Foam Media (includes: 10)	1 set	13.42
12	510184 Foam Filter Media for Dome Filter	1 ea.	3.65
13	510777 Upper Motor Support w/ Gasket	1 ea.	17.75
14	847768 Upper Motor Support (GoFit 6 HEPA)	1 ea.	15.50
15	510780 Motor Gaskets Upper and Lower	1 ea.	5.01
	510812 Upper & Lower Motor Gaskets (GoFit 6 HEPA)	1 set	5.57
16	844193 Motor Assembly 1300W	1 ea.	185.64
	844545 Motor Assembly with Lead (GoFit 6 PLUS)	1 ea.	191.20
	847770 Motor Assembly (GoFit 6 HEPA)	1 ea.	168.53
17	841933 Carbon Brush Set	2 ea.	35.64
18	510781 Lower Motor Support w/ Screws	1 set	11.57
19	510776 Cover Wire w/ Screws	1 set	5.62
20	843963 Upper Foam Pad	1 ea.	3.99
21	843964 Lower Foam Pad	1 ea.	3.95
22	510778 Lower Housing Assembly w/ Screws	1 set	26.21
23	844488 Exhaust Filter Made from HEPA Media	2 ea.	19.64
24	843848 Exhaust Filter Door	1 ea.	9.69
25	844073 Harness Complete Assembly	1 ea.	118.93
26	844665 Upper Harness Assembly	1 ea.	59.89
27	843939 Lower Harness Assembly	1 ea.	58.59
28	510771 Upper Harness Plate w/ Screw	1 ea.	9.45
29	510772 Lower Harness Plate w/ Screw	1 ea.	9.60
30	843842 Lower Harness Articulating Arm	1 ea.	7.78
31	843947 Harness Quick Adjuster Assembly	1 ea.	10.04
32	510773 Harness Quick Adjust Holder w/ Screw (GoFit 10)	1 set	7.91
	510774 Harness Quick Adjust Holder w/ Screw (GoFit 6)	1 set	7.91
	510775 Harness Quick Adjust Holder w/ Screw (GoFit 3)	1 set	7.91
33	844156 Switch Box Assembly	1 ea.	55.66
	844156-2 Switch Box Assembly w/ Internal Electronics (GoFit 6 PLUS)	1 ea.	90.68
	844156-1 Switch Box Assembly for GoFit PH service (GoFit PH)	1 ea.	69.53
34	510782 Yellow Cord Guide w/ Screws	1 ea.	11.72
35	510783 Fastener Package	1 ea.	4.82
	101678 50' Extension Cord (Not shown)	1 ea.	57.11

Highlighted SKUs are shared parts with Super Coach Pro 6/10 vacuums