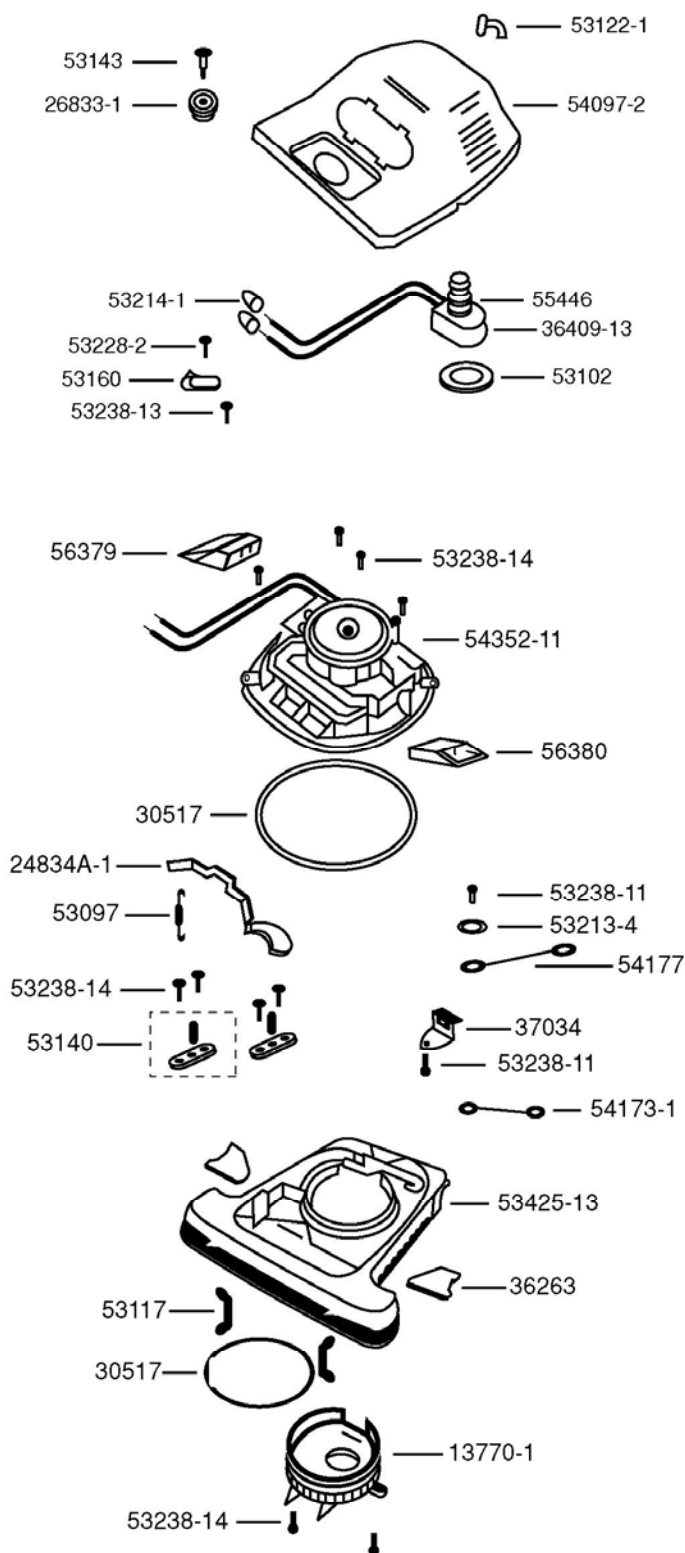




## Sanitaire ESC886 12" Upright Base & Complete Motor



13770-1	Fan Chamber Cover
24834A-1	Foot Pedal
24964A	Cam (R.H.) **
24965A	Cam (L.H.) **
26833-1	Adjustment Knob
30517	Motor Seal Gasket (2)
36263	Wheel Cover
36409-13	Push Switch
37034	Adapter Retainer
37654	Nameplate **
49052-3	Foam Tape **
52334	Fan Chamber Replacement Kit **
53097	Foot Pedal Spring (1)
53102	Washer
53117	Hood Spring (2)
53118	Rivet-Cam (2)**
53122-1	Strain Relief Bushing (1)
53133	Washer (2) **
53140	Clamp & Screw Assembly (2)
53143	Shoulder Screw (1)
53160	Cable Clamp (1)
53213-4	Nut (1)
53214-1	Wire Nut (3)
53228-2	Screw (1)
53238-11	Screw (2)
53238-13	Screw (1)
53238-14	Screw (9)
53425-13	Base Assembly
54097-2	Hood & Nameplate Assembly
54173-1	Wire & Terminal
54177	Wire & Terminal
54352-11	Motor Assembly
55446	Switch Nut
55754	Decal **
56379	Air Inlet Duct Assembly (R.H.)
56380	Air Inlet Duct Assembly (L.H.)

\*\* Not Illustrated

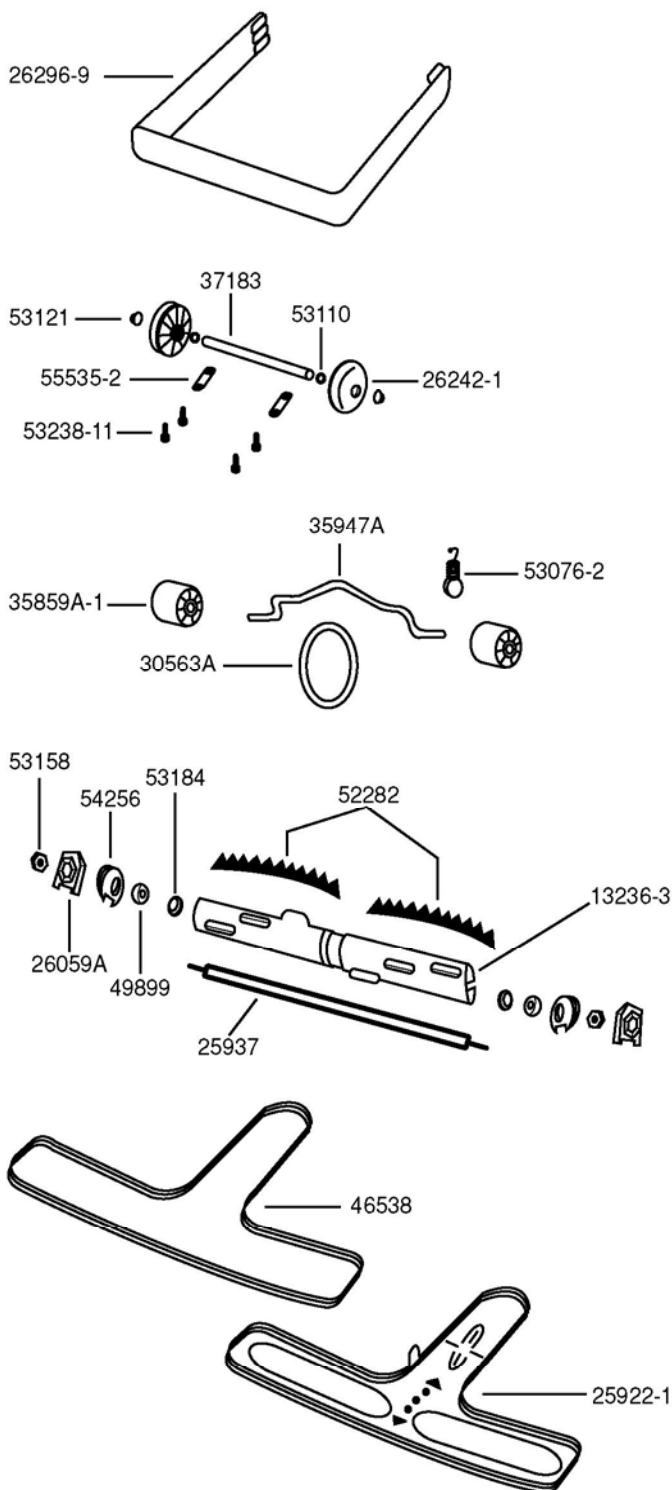


P.O. Box 72 - 105 Scott Ave  
Paris, ON N3L 3E5  
Toll Free: 800-263-3731 Fax: 800-489-7280

July 2002



# Sanitaire ESC886 12" Upright Brush Roller Assembly



13236-3	Disturbulator Tube
25922-1	Bottom Plate Assembly
25937	Shaft
26059A	Cap Cover
26242-1	Rear Wheel
26296-9	Furniture Guard
30563A	Belt
35859A-1	Front Wheel
35947A	Front Axle
37183	Rear Axle
37234-1	Wheel & Axle Assembly **
46538	Foam Tape
49899	Felt Washer
52282	Bristle Strip Assembly
53076-2	Axle Spring
53110	Wheel Washer (2)
53121	Pushnut (2)
53158	Locknut (2)
53184	Klipring (2)
53238-11	Screw (4)
54256	Bearing Retainer (2)
55535-2	Axle Clamp (2)

\*\* Not Illustrated



**MICHAEL'S**

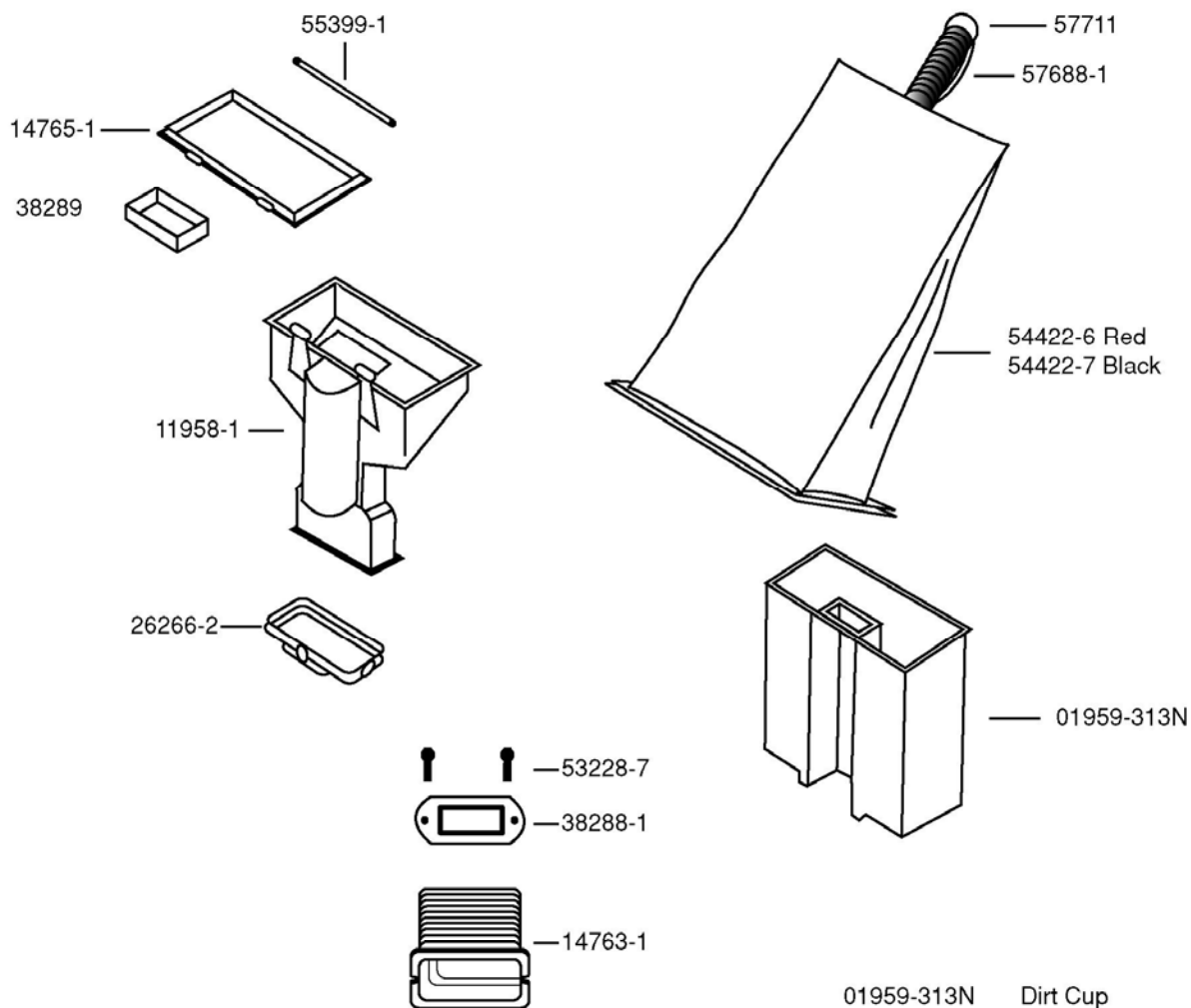
P.O. Box 72 - 105 Scott Ave  
Paris, ON N3L 3E5

Toll Free: 800-263-3731 Fax: 800-489-7280

July 2002



# Sanitaire 889 & 899 Dust Cup



01959-313N	Dirt Cup
11958-1**	Dirt Cup Support
14763-1	Bellows
14765-1**	Bag Flange
26266-2**	Clamp
38288-1	Clamp
38289**	Gasket
53228-7	Screw
54422-6	Bag Assembly Red
54422-7	Bag Assembly Black
55399-1**	Cover Pin
57688-1	Snap Hook
57711	Steel Ring
14844-1	Dirt Cup Assembly Includes **



P.O. Box 72 - 105 Scott Ave  
Paris, ON N3L 3E5  
Toll Free: 800-263-3731 Fax: 800-489-7280

July 2002

# SANITAIRE 886 & 899

## DUST CUP ASSEMBLY INSTRUCTIONS

### Read Fully Before Starting

**IMPORTANT:** If you are changing the dust collecting device from a bag to the dust cup, on an assembled unit, you must start from **STEP #1**. If the unit is not yet assembled start at **STEP #4**.

- STEP #1**     **BAG REMOVAL** – Remove the cloth bag from the cleaner by releasing the lower lever on the bag collar, then unhook the spring from the upper cord hook.
- STEP #2**     **CORD** – Free the cord by twisting and pulling the upper and lower cord hooks to remove them from the chrome tube.
- STEP #3**     **HANDLE** – With a slotted screwdriver, separate the upper and lower chrome handles. Also remove the lower chrome tube from the handle socket.

**START HERE IF THE UNIT IS NOT ALREADY ASSEMBLED.**

- STEP #4**     **REMOVE BAG CLIP** – Using a #20 torx screwdriver, remove the bag clip from the bottom of the cleaner.
- STEP #5**     **DRILL HOLES** – Align the supplied templet with the cleaner outlet. Mark and drill the two 13/64 - .203 " (5.0mm) diameter holes. **Caution: Only drill through the outer wall of the base, approximately 1/8 inch thickness. Do not drill into the side of the exhaust air channel.**
- STEP #6**     **ASSEMBLING DUST CUP ASSEMBLY TO BASE** – When attaching the dust cup assembly to the base, be sure the rubber bellows is seated securely within the flange area of the bellows adapter.
- STEP #7**     **ATTACH BELLOWS** – Continuing to ensure the bellows remains properly seated within the flange, align the holes with the drilled holes in the base. Insert the supplied bolts and start both nuts; then tighten.
- STEP #8**     **ATTACH LOWER HANDLE** – Raise the dust cup support. Push the lower handle (largest end down) through the tube of the dust cup support and into the handle socket at the back of the cleaner. Align the holes, insert a 2-part bolt (A) and tighten.
- STEP #9**     **ASSEMBLE UPPER HANDLE** – Use the newly supplied upper handle. Hold the handle so it curves away from the cleaner. Then push it down over the lower handle. Secure with the other 2-part handle bolt (A).
- STEP #10**    **OPEN DUST CUP LID** – Release each latch on the dust cup support (push down on the lock, lift up on the bottom of the latch and pull the top forward). Swivel the lid up and outward.
- STEP #11**    **ATTACH CLOTH BAG** – Hold the cloth bag by the lower rim so the front faces away from the cleaner. Drop the bag through the open lid. Push each of the 3 tabs on the lower bag rim into the corresponding notches on the dust cup lid. Swivel the lid over the dust cup support and secure each latch.
- STEP #12**    **SECURE CORD CLAMP** – Secure the electrical cord to the dust cup support with the supplied cord clamp and screw (D). Place the cord clamp over the electrical cord. Screw the clamp to the tab below the left latch, start the screw by hand, then tighten.
- STEP #13**    **ATTACH THE CORD HOOK** – Pull the spring on the electrical cord upward toward the top of the handle. Insert the lower rings of the spring into the corresponding notch of the newly supplied cord hook. Snap the hook into the upper handle.  
1. Place inner tab into slot     2. Press hook around handle     3. SNAP opposite inner tab into place.  
Pull up on the cord to tighten but leave enough slack near the base so the cord is not strained when the handle is lowered.
- STEP #14**    **STORE ELECTRICAL CORD** – Loop the cord around the cord hook and secure the plug to prevent unwinding.
- STEP #15**    **HOOK BAG TOP** – Slip the ring at the top of the cloth bag over the bag support hook on the back of the cord hook.

## **SANITAIRE 886 & 899**

### **DUST CUP AND BAG**

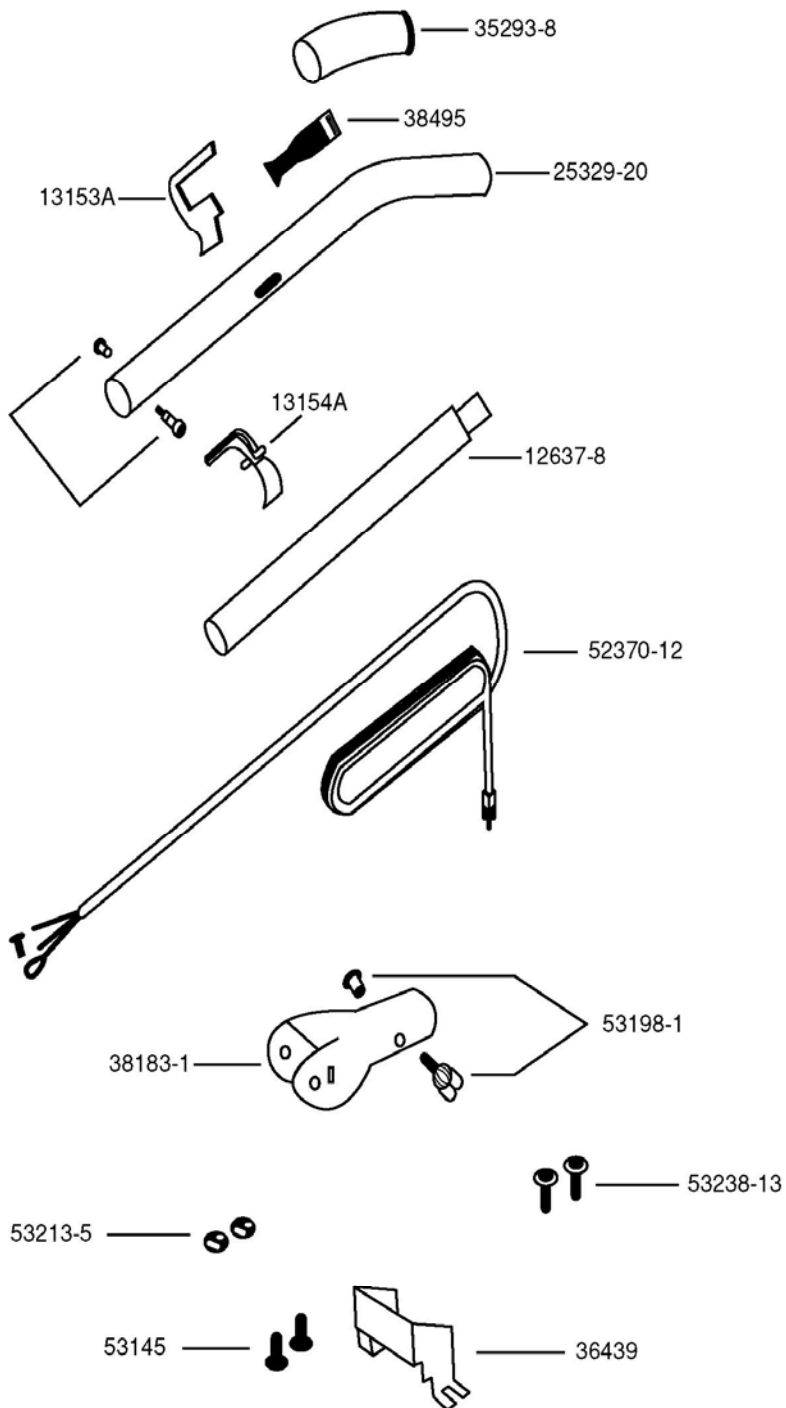
The cloth bag and the dust cup play a very important role in the efficiency of the vacuum cleaner. The cloth bag allows air to move through the cleaner while it traps dirt inside the cloth bag and the dust cup. When dirt particles cling to the cloth bag, they can restrict airflow. If air cannot pass through the cloth bag, no cleaning can take place regardless of how powerful the unit. Some fine particles can restrict airflow very quickly and will decrease performance even before the dust cup appears to be full. For that reason, when vacuuming powder, flour dust, or similar fine substances, it may be necessary to turn off the cleaner and empty the dust cup more often.

**Note:** Turn off the switch and unplug the electrical cord before emptying the dust cup. Never operate the vacuum cleaner without the dust cup latched in place.

1. Unhook the clip from the top of the cloth bag.
2. Shake the cloth bag to release dust clinging inside.
3. Release each latch one on each side of the handle. (Push down on the lock, lift up on the bottom and pull the top forward.)
4. Lift the lid; swing it up and outward.
5. Reach in, grasp the dust cup and pull it out of the support.
6. Empty contents in a suitable container.  
(If desired, the cup can be washed in warm water using a mild soap solution. Be sure the cup is completely dry before replacing)
7. Place the cup into the support, swing the lid shut and fasten each latch.
8. Hook clip to the top of the bag.



## Sanitaire ESC886 12" Upright Handle & Cord Assembly



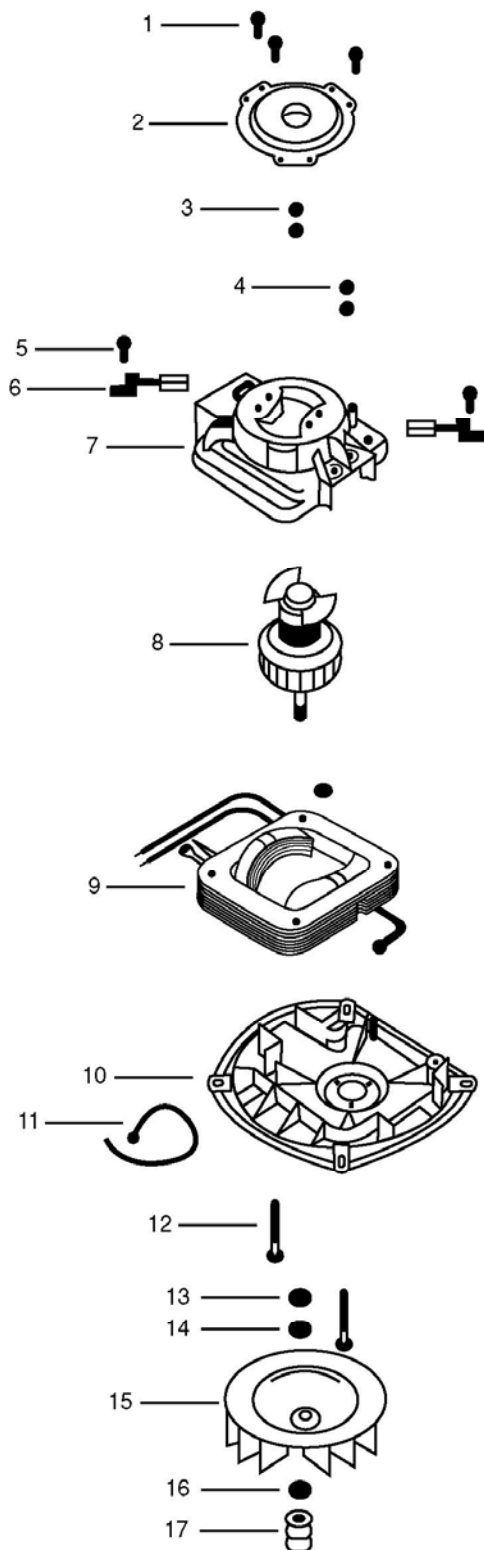
12637-8	Lower Handle Tube
13153A	Upper Cord Clip
13154A	Lower Cord Clip
25329-20	Upper Handle Assembly
25293-8	Handle Grip
36439	Handle Socket Shield
38183-1	Handle Socket Assembly
38495	Spring
52370-12	Supply Cord
53145	Bolt
53198-1	Screw & Nut Assembly
53213-5	Nut
53238-13	Screw



P.O. Box 72 - 105 Scott Ave  
Paris, ON N3L 3E5  
Toll Free: 800-263-3731 Fax: 800-489-7280

July 2002

# Sanitaire ESC886 12" Upright Motor Assembly

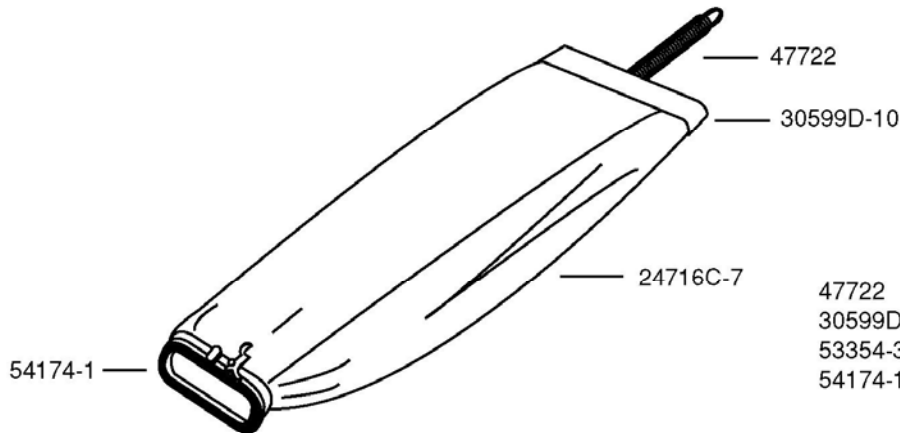


1	53138	Retainer Screw (3)
2	20217E	Retainer Assembly
3	53213-4	Hex Nut, (4)
4	53222-3	Lockwasher
5	53219-2	Brush Screw
6	30478	Motor Brush Assembly (2)
7	54396	Motor Cover
8	54395-4	Armature & Fan Assembly - Includes ^^
**	30474A	Fan ^^
9	53441-2	Field Assembly
10	54169-1	Motor Base Assembly - Includes ##
---	54412	Bearing & Retainer ##
---	53088-1	Bearing
---	53187-1	Rivet
11	56802-2	Cable Tie
12	53142	Orlo Thread Screw (2)
13	53188-1	Washer
14	53148	Fan Washer
15	12988	Lexan Fan
16	53148	Fan Washer
17	37012-2	Pulley

\*\* Not Illustrated



## Sanitaire ESC886 12" Upright Bag & Wiring

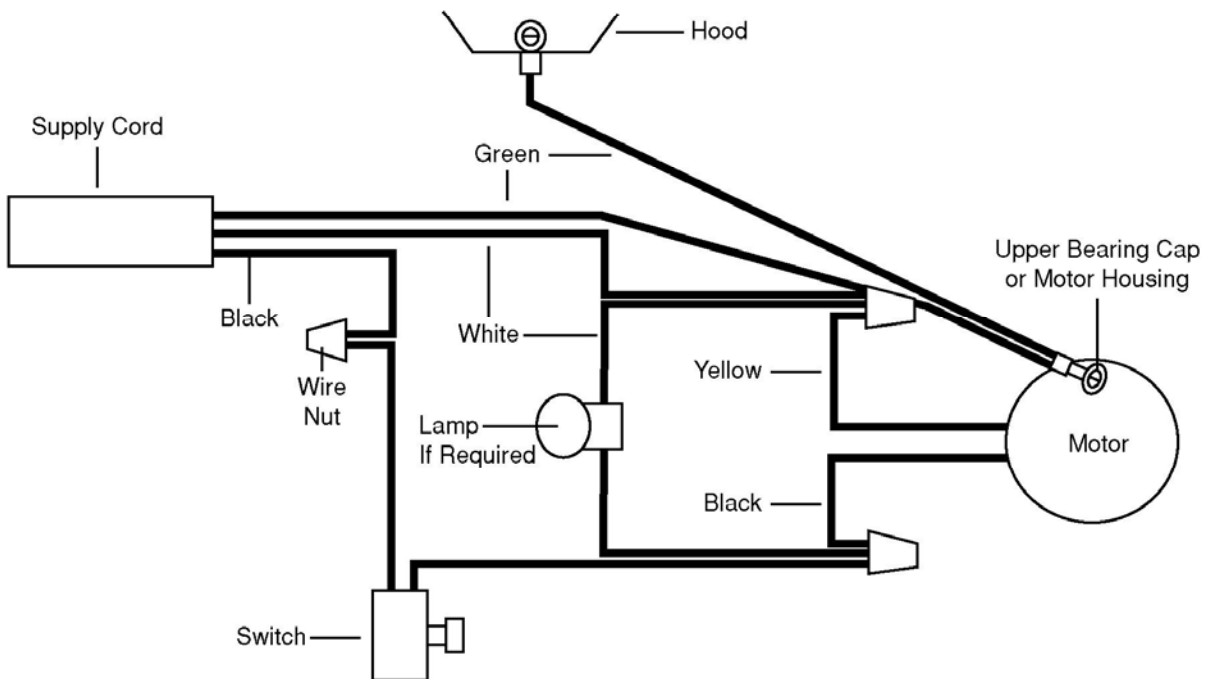


47722 Bag Spring  
30599D-10 Bag Clip  
53354-3 Dump Bag Assembly (Includes Items 1,2 & 3)  
54174-1 Bag Adapter Includes;  
48282 Gasket \*\*  
48748 Washer \*\*  
48749 Rivet \*\*

49461A Hardware Package (Includes following) \*\*  
55468-1 Handle Screw (2) \*\*  
13154-1 Cord Retainer \*\*  
13153-1 Cord Retainer \*\*

\*\*Not Illustrated

### 36575 WIRING DIAGRAM



P.O. Box 72 - 105 Scott Ave  
Paris, ON N3L 3E5  
Toll Free: 800-263-3731 Fax: 800-489-7280

July 2002

# SANITAIRE 886 & 899

## DUST CUP ASSEMBLY INSTRUCTIONS

### Read Fully Before Starting

**IMPORTANT:** If you are changing the dust collecting device from a bag to the dust cup, on an assembled unit, you must start from **STEP #1**. If the unit is not yet assembled start at **STEP #4**.

- STEP #1**     **BAG REMOVAL** – Remove the cloth bag from the cleaner by releasing the lower lever on the bag collar, then unhook the spring from the upper cord hook.
- STEP #2**     **CORD** – Free the cord by twisting and pulling the upper and lower cord hooks to remove them from the chrome tube.
- STEP #3**     **HANDLE** – With a slotted screwdriver, separate the upper and lower chrome handles. Also remove the lower chrome tube from the handle socket.

**START HERE IF THE UNIT IS NOT ALREADY ASSEMBLED.**

- STEP #4**     **REMOVE BAG CLIP** – Using a #20 torx screwdriver, remove the bag clip from the bottom of the cleaner.
- STEP #5**     **DRILL HOLES** – Align the supplied templet with the cleaner outlet. Mark and drill the two 13/64 - .203 " (5.0mm) diameter holes. **Caution: Only drill through the outer wall of the base, approximately 1/8 inch thickness. Do not drill into the side of the exhaust air channel.**
- STEP #6**     **ASSEMBLING DUST CUP ASSEMBLY TO BASE** – When attaching the dust cup assembly to the base, be sure the rubber bellows is seated securely within the flange area of the bellows adapter.
- STEP #7**     **ATTACH BELLOWS** – Continuing to ensure the bellows remains properly seated within the flange, align the holes with the drilled holes in the base. Insert the supplied bolts and start both nuts; then tighten.
- STEP #8**     **ATTACH LOWER HANDLE** – Raise the dust cup support. Push the lower handle (largest end down) through the tube of the dust cup support and into the handle socket at the back of the cleaner. Align the holes, insert a 2-part bolt (A) and tighten.
- STEP #9**     **ASSEMBLE UPPER HANDLE** – Use the newly supplied upper handle. Hold the handle so it curves away from the cleaner. Then push it down over the lower handle. Secure with the other 2-part handle bolt (A).
- STEP #10**    **OPEN DUST CUP LID** – Release each latch on the dust cup support (push down on the lock, lift up on the bottom of the latch and pull the top forward). Swivel the lid up and outward.
- STEP #11**    **ATTACH CLOTH BAG** – Hold the cloth bag by the lower rim so the front faces away from the cleaner. Drop the bag through the open lid. Push each of the 3 tabs on the lower bag rim into the corresponding notches on the dust cup lid. Swivel the lid over the dust cup support and secure each latch.
- STEP #12**    **SECURE CORD CLAMP** – Secure the electrical cord to the dust cup support with the supplied cord clamp and screw (D). Place the cord clamp over the electrical cord. Screw the clamp to the tab below the left latch, start the screw by hand, then tighten.
- STEP #13**    **ATTACH THE CORD HOOK** – Pull the spring on the electrical cord upward toward the top of the handle. Insert the lower rings of the spring into the corresponding notch of the newly supplied cord hook. Snap the hook into the upper handle.  
1. Place inner tab into slot     2. Press hook around handle     3. SNAP opposite inner tab into place.  
Pull up on the cord to tighten but leave enough slack near the base so the cord is not strained when the handle is lowered.
- STEP #14**    **STORE ELECTRICAL CORD** – Loop the cord around the cord hook and secure the plug to prevent unwinding.
- STEP #15**    **HOOK BAG TOP** – Slip the ring at the top of the cloth bag over the bag support hook on the back of the cord hook.

## **SANITAIRE 886 & 899**

### **DUST CUP AND BAG**

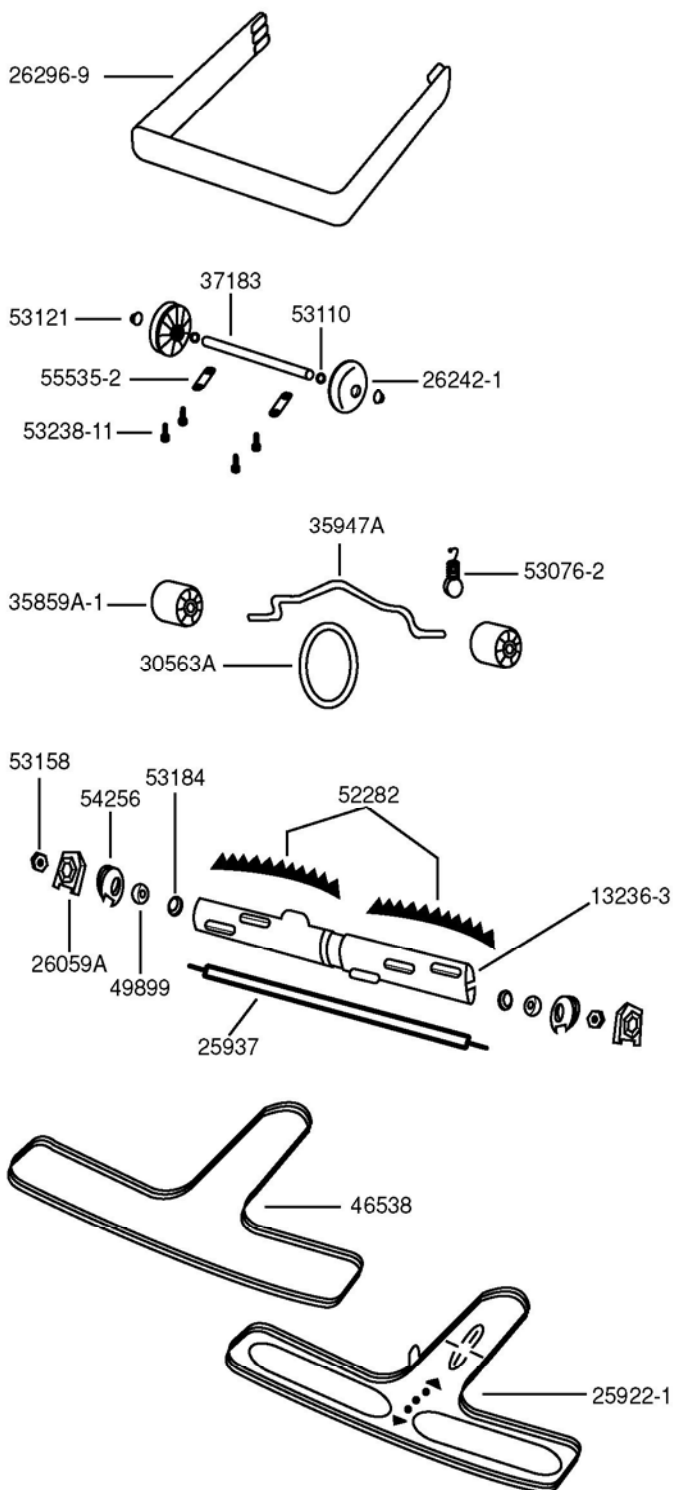
The cloth bag and the dust cup play a very important role in the efficiency of the vacuum cleaner. The cloth bag allows air to move through the cleaner while it traps dirt inside the cloth bag and the dust cup. When dirt particles cling to the cloth bag, they can restrict airflow. If air cannot pass through the cloth bag, no cleaning can take place regardless of how powerful the unit. Some fine particles can restrict airflow very quickly and will decrease performance even before the dust cup appears to be full. For that reason, when vacuuming powder, flour dust, or similar fine substances, it may be necessary to turn off the cleaner and empty the dust cup more often.

**Note:** Turn off the switch and unplug the electrical cord before emptying the dust cup. Never operate the vacuum cleaner without the dust cup latched in place.

1. Unhook the clip from the top of the cloth bag.
2. Shake the cloth bag to release dust clinging inside.
3. Release each latch one on each side of the handle. (Push down on the lock, lift up on the bottom and pull the top forward.)
4. Lift the lid; swing it up and outward.
5. Reach in, grasp the dust cup and pull it out of the support.
6. Empty contents in a suitable container.  
(If desired, the cup can be washed in warm water using a mild soap solution. Be sure the cup is completely dry before replacing)
7. Place the cup into the support, swing the lid shut and fasten each latch.
8. Hook clip to the top of the bag.



# Sanitaire ESC886 12" Upright Brush Roller Assembly



- |          |                          |
|----------|--------------------------|
| 13236-3  | Disturbulator Tube       |
| 25922-1  | Bottom Plate Assembly    |
| 25937    | Shaft                    |
| 26059A   | Cap Cover                |
| 26242-1  | Rear Wheel               |
| 26296-9  | Furniture Guard          |
| 30563A   | Belt                     |
| 35859A-1 | Front Wheel              |
| 35947A   | Front Axle               |
| 37183    | Rear Axle                |
| 37234-1  | Wheel & Axle Assembly ** |
| 46538    | Foam Tape                |
| 49899    | Felt Washer              |
| 52282    | Bristle Strip Assembly   |
| 53076-2  | Axle Spring              |
| 53110    | Wheel Washer (2)         |
| 53121    | Pushnut (2)              |
| 53158    | Locknut (2)              |
| 53184    | Klipring (2)             |
| 53238-11 | Screw (4)                |
| 54256    | Bearing Retainer (2)     |
| 55535-2  | Axle Clamp (2)           |

\*\* Not Illustrated



**MICHAEL'S**

P.O. Box 72 - 105 Scott Ave

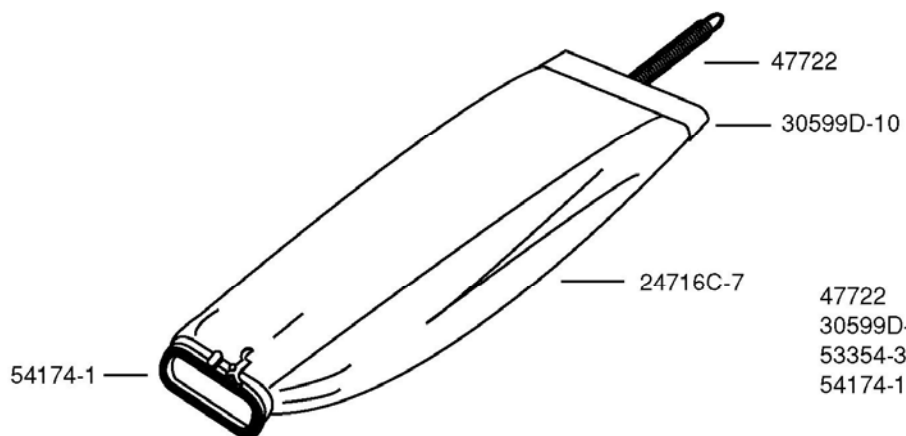
Paris, ON N3L 3E5

Toll Free: 800-263-3731 Fax: 800-489-7280

July 2002



## Sanitaire ESC886 12" Upright Bag & Wiring

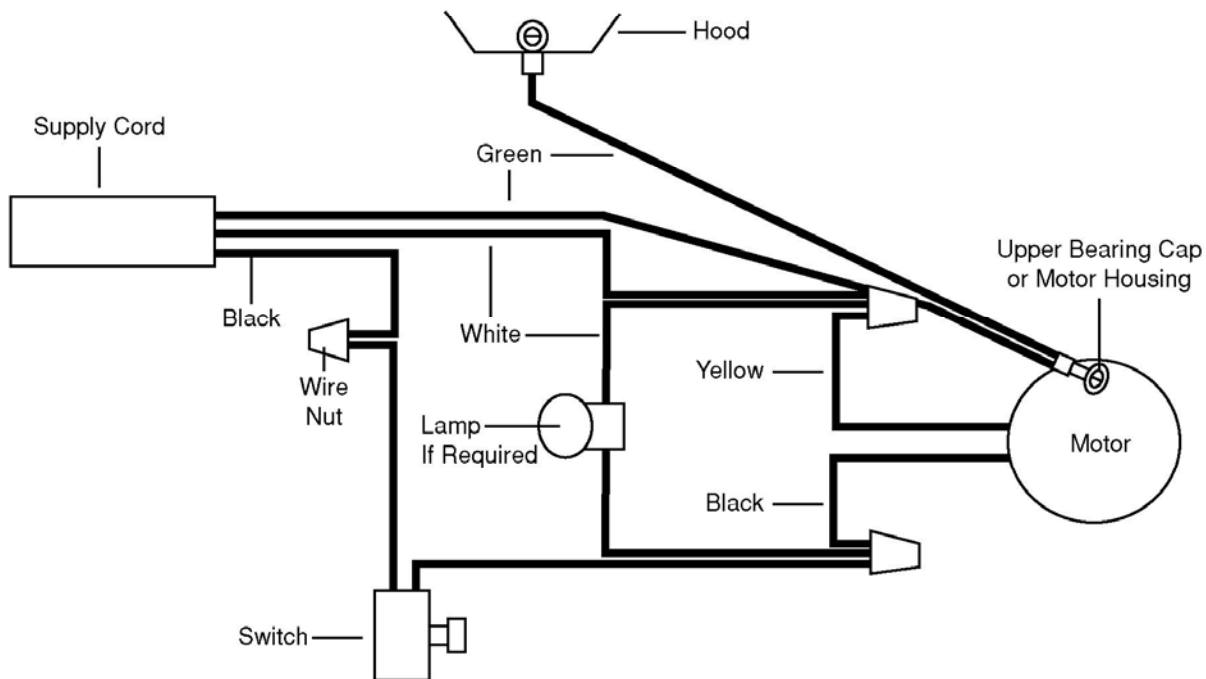


47722 Bag Spring  
30599D-10 Bag Clip  
53354-3 Dump Bag Assembly (Includes Items 1,2 &  
54174-1 Bag Adapter Includes;  
48282 Gasket \*\*  
48748 Washer \*\*  
48749 Rivet \*\*

49461A Hardware Package (Includes following) \*\*  
55468-1 Handle Screw (2) \*\*  
13154-1 Cord Retainer \*\*  
13153-1 Cord Retainer \*\*

\*\*Not Illustrated

### 36575 WIRING DIAGRAM

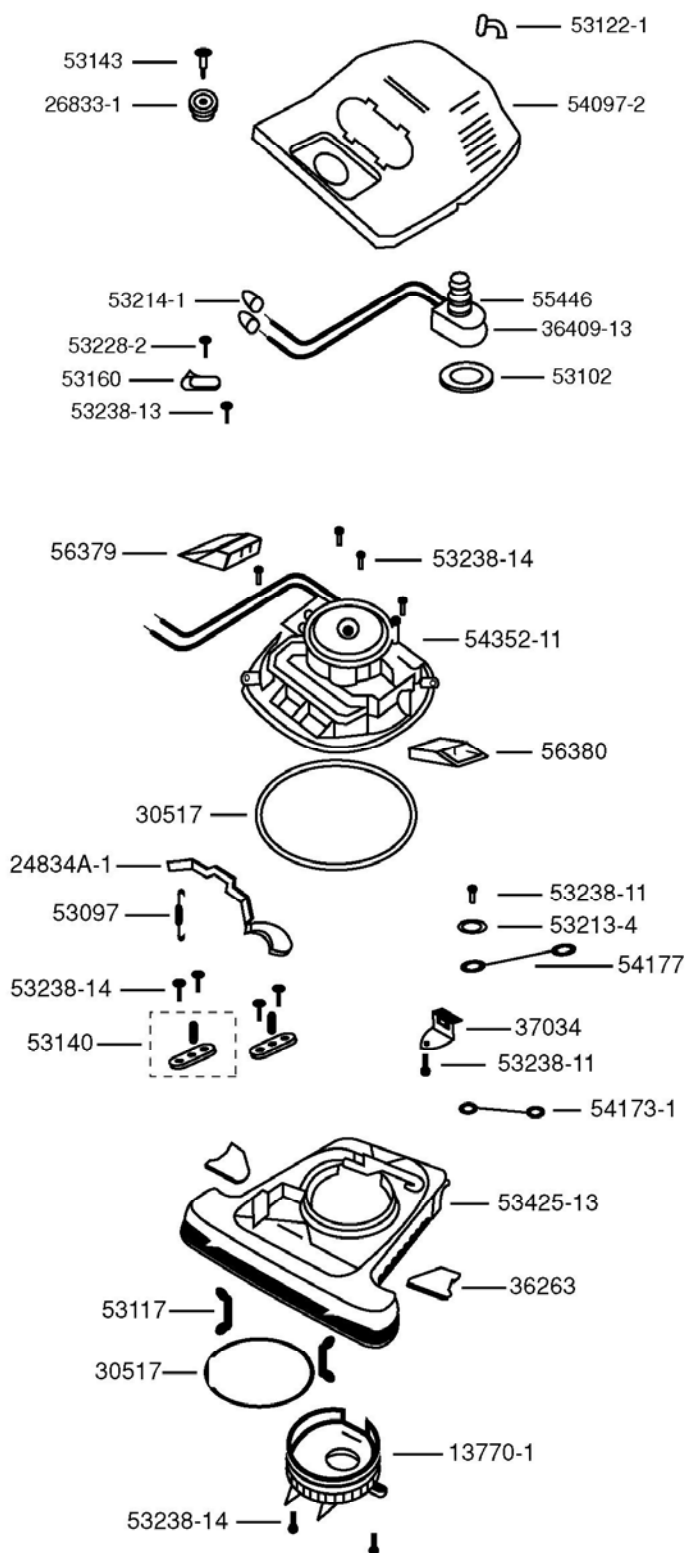


P.O. Box 72 - 105 Scott Ave  
Paris, ON N3L 3E5  
Toll Free: 800-263-3731 Fax: 800-489-7280

July 2002



# Sanitaire ESC886 12" Upright Base & Complete Motor

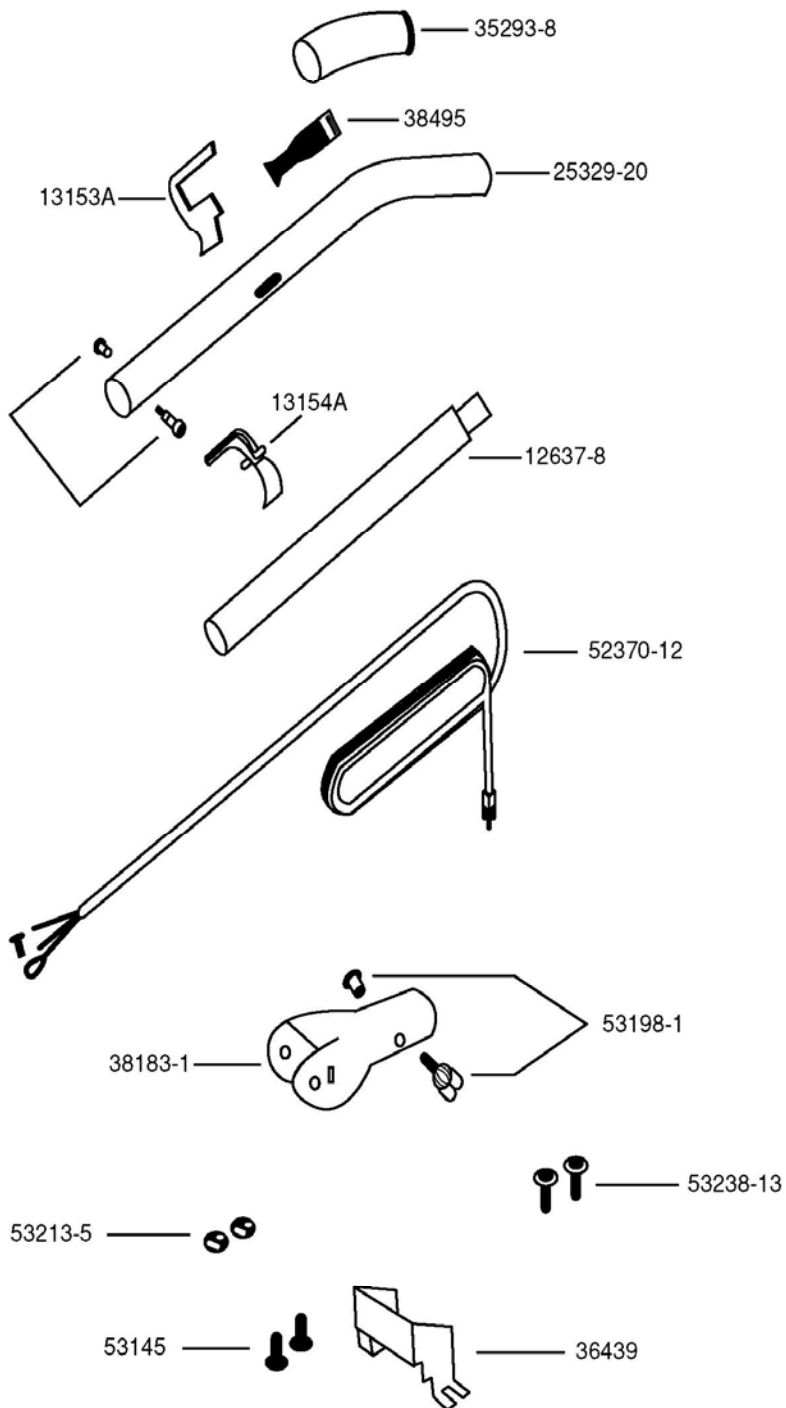


- 13770-1 Fan Chamber Cover
- 24834A-1 Foot Pedal
- 24964A Cam (R.H.) \*\*
- 24965A Cam (L.H.) \*\*
- 26833-1 Adjustment Knob
- 30517 Motor Seal Gasket (2)
- 36263 Wheel Cover
- 36409-13 Push Switch
- 37034 Adapter Retainer
- 37654 Nameplate \*\*
- 49052-3 Foam Tape \*\*
- 52334 Fan Chamber Replacement Kit \*\*
- 53097 Foot Pedal Spring (1)
- 53102 Washer
- 53117 Hood Spring (2)
- 53118 Rivet-Cam (2)\*\*
- 53122-1 Strain Relief Bushing (1)
- 53133 Washer (2) \*\*
- 53140 Clamp & Screw Assembly (2)
- 53143 Shoulder Screw (1)
- 53160 Cable Clamp (1)
- 53213-4 Nut (1)
- 53214-1 Wire Nut (3)
- 53228-2 Screw (1)
- 53238-11 Screw (2)
- 53238-13 Screw (1)
- 53238-14 Screw (9)
- 53425-13 Base Assembly
- 54097-2 Hood & Nameplate Assembly
- 54173-1 Wire & Terminal
- 54177 Wire & Terminal
- 54352-11 Motor Assembly
- 55446 Switch Nut
- 55754 Decal \*\*
- 56379 Air Inlet Duct Assembly (R.H.)
- 56380 Air Inlet Duct Assembly (L.H.)

\*\* Not Illustrated



## Sanitaire ESC886 12" Upright Handle & Cord Assembly



12637-8	Lower Handle Tube
13153A	Upper Cord Clip
13154A	Lower Cord Clip
25329-20	Upper Handle Assembly
25293-8	Handle Grip
36439	Handle Socket Shield
38183-1	Handle Socket Assembly
38495	Spring
52370-12	Supply Cord
53145	Bolt
53198-1	Screw & Nut Assembly
53213-5	Nut
53238-13	Screw

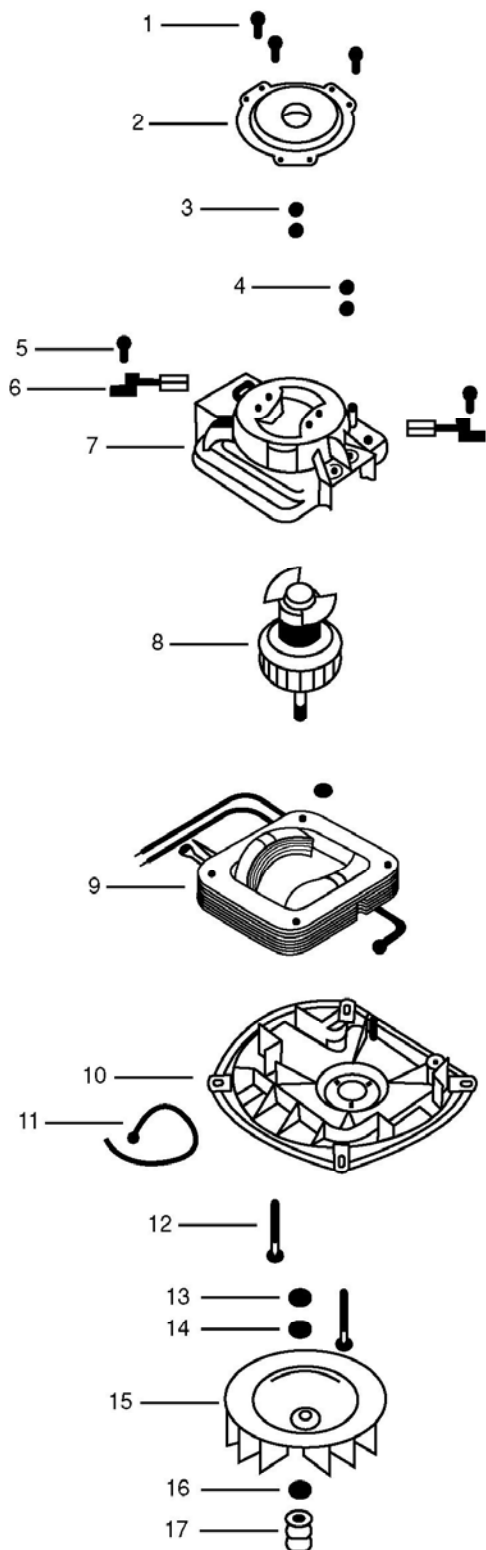


P.O. Box 72 - 105 Scott Ave  
Paris, ON N3L 3E5  
Toll Free: 800-263-3731 Fax: 800-489-7280

July 2002



# Sanitaire ESC886 12" Upright Motor Assembly



1	53138	Retainer Screw (3)
2	20217E	Retainer Assembly
3	53213-4	Hex Nut, (4)
4	53222-3	Lockwasher
5	53219-2	Brush Screw
6	30478	Motor Brush Assembly (2)
7	54396	Motor Cover
8	54395-4	Armature & Fan Assembly - Includes ^^
**	30474A	Fan ^^
9	53441-2	Field Assembly
10	54169-1	Motor Base Assembly - Includes ##
---	54412	Bearing & Retainer ##
---	53088-1	Bearing
---	53187-1	Rivet
11	56802-2	Cable Tie
12	53142	Orlo Thread Screw (2)
13	53188-1	Washer
14	53148	Fan Washer
15	12988	Lexan Fan
16	53148	Fan Washer
17	37012-2	Pulley

\*\* Not Illustrated



P.O. Box 72 - 105 Scott Ave  
Paris, ON N3L 3E5  
Toll Free: 800-263-3731 Fax: 800-489-7280

July 2002