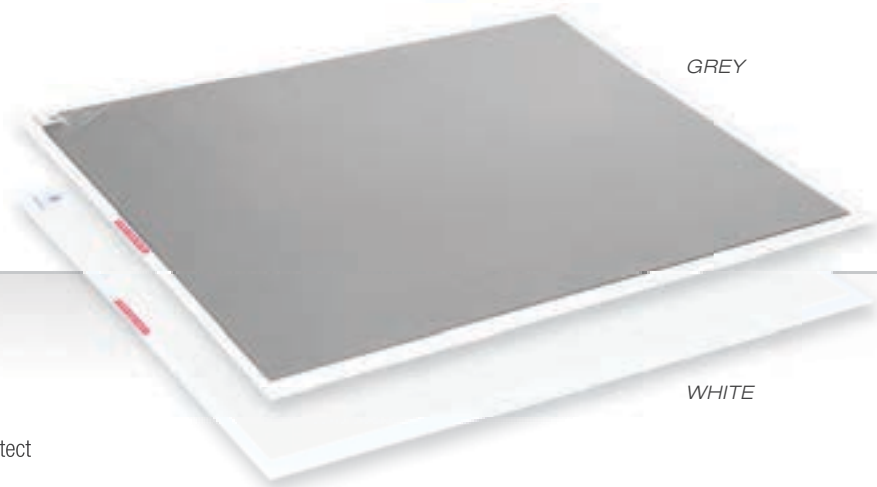


When top layer is dirty, simply peel and discard



GREY

WHITE

- For indoor applications requiring critical cleanliness e.g.: cleanrooms, laboratories, curling ice rinks...
- 60 shoe-cleaning tacky sheets treated with an anti-microbial agent protect against bacterial growth, mold and mildew
- Nontoxic refillable frame with a slip resistant backing
- Frame made from 50% recycled material



**MATS:** Single tray: 2'8" x 2'2", double tray: 2'8" x 4'3",  
Refill (case of 4 replacement pads)



**SPECS:** 1/8" thick, polyethylene backing, total weight 8 lbs for single tray, 16 lbs for double tray, 12 lbs for refill (4 pads)



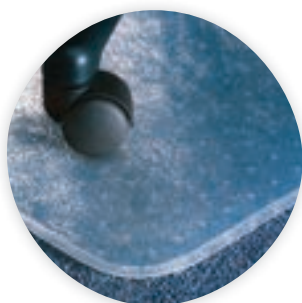
**CUSTOM MATS:** Unavailable



**WARRANTY:** Limited 1 year



**FOR MORE INFO:** [mattech.ca/walknclean](http://mattech.ca/walknclean)



#990  
**CHAIR MATS**

- Commercial-quality chair mats for offices allow desk chairs to move effortlessly
- Available in different models for all types of carpet and flooring



#290  
**VELCRO® STRIPS**

- Self-applied adhesive Velcro® strips secures mat to loop-pile carpeting
- Can be easily applied to most vinyl backed products
- Available in 4" wide strips cut to length or by the 75' roll



**MAT-LOCK™ BACKING**

- Slip-resistant backing secures mat to hard surfaces such as wood, ceramic tile, marble, linoleum, etc.
- Factory-applied to most vinyl backed products



**PEEL-N-STICK™ NOSING**

- Loose vinyl nosing to be applied to ends of vinyl backed mat
- "No glue required" means quick and easy installation. For instructions, visit [mattech.ca/nosing](http://mattech.ca/nosing)
- Available in standard rolls of 3/4" x 100' or heavy-duty rolls of 1 1/2" x 50'
- Regular nosing also available. Glue sold separately.



**RUG-HUGGER™ BACKING**

- Anti-slip backing reduces mat movement on carpets
- Factory-applied to most vinyl backed products



#296  
**TACK-TAPE™**

- Specially designed double-sided tape secures foam products and vinyl backed carpet mats to floors. *Spec sheet available upon demand*
- Available in 4" x 250'

Ask our customer service for more information on these accessories