

OTHERS

#930

ELECTRICALLY CONDUCTIVE DECK PLATE

ANTI-STATIC

Stock mats include one installed ground cord

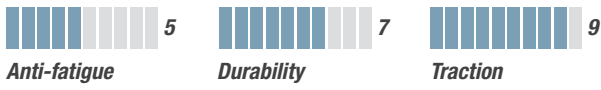


PROFILE VIEW



BLACK

- For anti-static applications in dry areas e.g.: computer workstations and terminals, electrical rooms...
- Sponge foam backing provides comfort and fatigue relief
- Quickly drains static charge to protect components and equipment
- Static dissipative surface resistivity of 106 ohms per square
- Bevelled edges for improved safety



In comparison to all our mats.



MATS: 2'x3', 3'x5', 3'x12', one installed ground cord included



ROLLS: 3'x75'



CUSTOM MATS: Up to 3'x75'.

Need one ground cord per 10' (sold separately)



SPECS: 9/16" thick, vinyl surface fused to a vinyl foam, surface electrical properties: 1/100 sec from 20,000 volts to harmless, total weight 1.50 lb/ft²



WARRANTY: Limited 1 year



FOR MORE INFO: mattech.ca/ecdp

OTHERS

#920

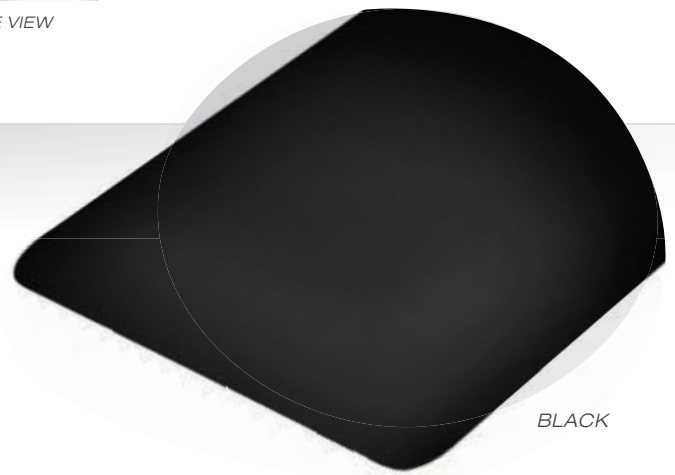
STAT-CONTROL

ANTI-STATIC

Stock mats include one installed ground cord



PROFILE VIEW



BLACK

- For anti-static applications in dry areas e.g.: computer workstations and terminals, electrical rooms, cashier stations...
- Sponge foam backing provides comfort and fatigue relief
- Quickly drains static charge to protect components and equipment
- Static dissipative surface resistivity of 107 ohms per square
- Bevelled edges for improved safety
- Easy to clean



In comparison to all our mats.



MATS: 2'x3', 3'x5', 3'x12', one installed ground cord included



ROLLS: 3'x75'



CUSTOM MATS: Up to 3'x75'.

Needs one ground cord per 10' (sold separately)



SPECS: 1/2" thick, vinyl surface fused to a vinyl foam, surface electrical properties: 1/10 sec from 20,000 volts to harmless, total weight 1.33 lb/ft²



WARRANTY: Limited 1 year



FOR MORE INFO: mattech.ca/statcontrol